

## ERRFI1 Antibody

Catalog No: #37731

Orders: [order@signalwayantibody.com](mailto:order@signalwayantibody.com)Support: [tech@signalwayantibody.com](mailto:tech@signalwayantibody.com)

## Description

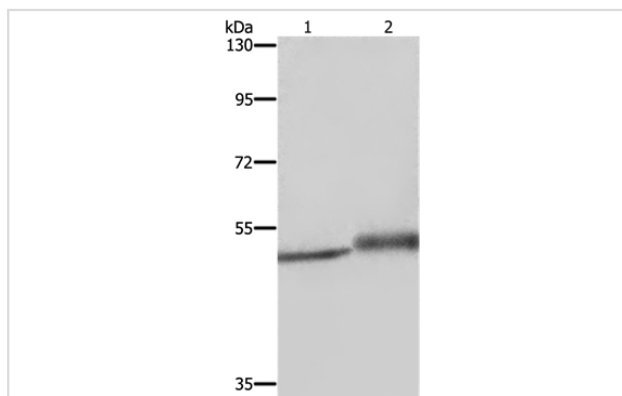
Product Name	ERRFI1 Antibody
Host Species	Rabbit
Clonality	Polyclonal
Purification	Antigen affinity purification.
Applications	WB IHC
Species Reactivity	Hu
Specificity	The antibody detects endogenous levels of total ERRFI1 protein.
Immunogen Type	Peptide
Immunogen Description	Synthetic peptide corresponding to a region derived from internal residues of human ERBB receptor feedback inhibitor 1
Target Name	ERRFI1
Other Names	MIG6; RALT; MIG-6; GENE-33
Accession No.	Swiss-Prot#: Q9UJM3NCBI Gene ID: 54206Gene Accssion: NP_061821
Uniprot	Q9UJM3
GeneID	54206;
SDS-PAGE MW	51kd
Concentration	2.3mg/ml
Formulation	Rabbit IgG in pH7.4 PBS, 0.05% NaN <sub>3</sub> , 40% Glycerol.
Storage	Store at -20°C

## Application Details

Western blotting: 1:200-1:1000

Immunohistochemistry: 1:25-1:100

## Images



Gel: 8%SDS-PAGE

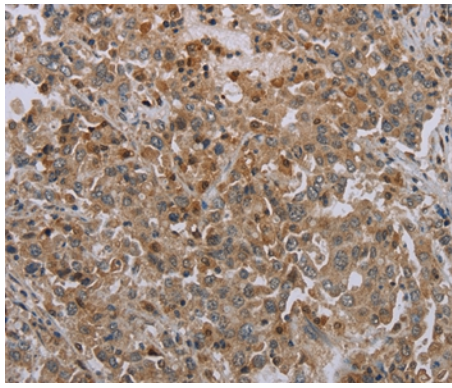
Lysates (from left to right): Human brain malignant glioma tissue and HepG2 cell

Amount of lysate: 40ug per lane

Primary antibody: 1/400 dilution

Secondary antibody dilution: 1/8000

Exposure time: 5 minutes



Immunohistochemical analysis of paraffin-embedded Human liver cancer tissue using #37731 at dilution 1/35.

## Background

ERRF1 is a cytoplasmic protein whose expression is upregulated with cell growth (Wick et al., 1995 [PubMed 7641805]). It shares significant homology with the protein product of rat gene-33, which is induced during cell stress and mediates cell signaling

Note: This product is for in vitro research use only