

TNPO1 Antibody

Catalog No: #37732

Orders: order@signalwayantibody.comSupport: tech@signalwayantibody.com

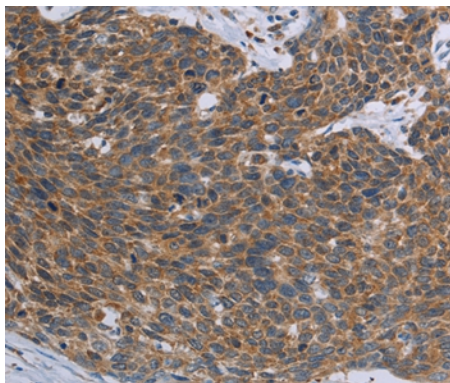
Description

Product Name	TNPO1 Antibody
Host Species	Rabbit
Clonality	Polyclonal
Purification	Antigen affinity purification.
Applications	IHC
Species Reactivity	Hu Ms
Specificity	The antibody detects endogenous levels of total TNPO1 protein.
Immunogen Type	Peptide
Immunogen Description	Synthetic peptide corresponding to a region derived from internal residues of human transportin 1
Target Name	TNPO1
Other Names	MIP; TRN; IPO2; MIP1; KPNB2
Accession No.	Swiss-Prot#: Q92973NCBI Gene ID: 3842Gene Accssion: NP_002261
Uniprot	Q92973
GeneID	3842;
Concentration	1.6mg/ml
Formulation	Rabbit IgG in pH7.4 PBS, 0.05% NaN ₃ , 40% Glycerol.
Storage	Store at -20°C

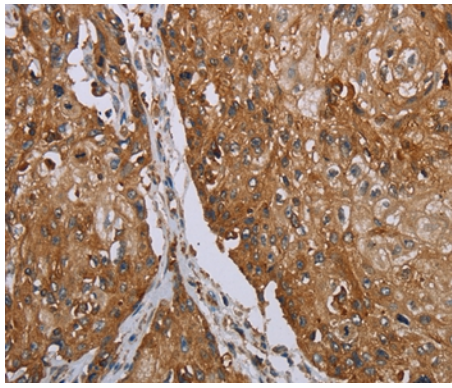
Application Details

Immunohistochemistry: 1:25-1:100

Images



Immunohistochemical analysis of paraffin-embedded Human cervical cancer tissue using #37732 at dilution 1/25.



Immunohistochemical analysis of paraffin-embedded Human esophagus cancer tissue using #37732 at dilution 1/25.

Background

This gene encodes the beta subunit of the karyopherin receptor complex which interacts with nuclear localization signals to target nuclear proteins to the nucleus. The karyopherin receptor complex is a heterodimer of an alpha subunit which recognizes the nuclear localization signal and a beta subunit which docks the complex at nucleoporins. Alternate splicing of this gene results in two transcript variants encoding different proteins.

Note: This product is for in vitro research use only