

# MOB1A Antibody

Catalog No: #37737

Orders: order@signalwayantibody.com

Support: tech@signalwayantibody.com

## Description

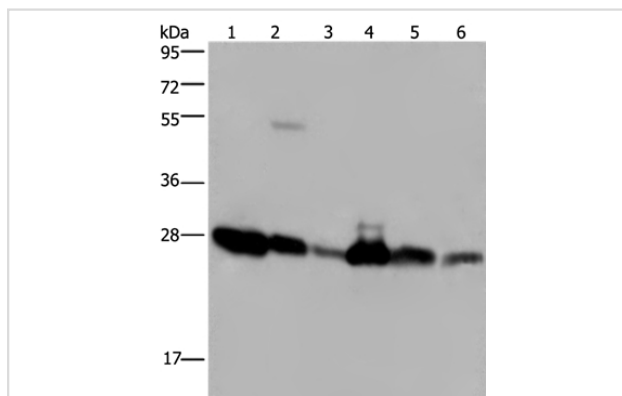
|                       |  |
|-----------------------|--|
| Product Name          | MOB1A Antibody   |
| Host Species          | Rabbit   |
| Clonality             | Polyclonal   |
| Purification          | Antigen affinity purification.   |
| Applications          | WB IHC   |
| Species Reactivity    | Hu Ms Rt   |
| Specificity           | The antibody detects endogenous levels of total MOB1A protein.                                   |
| Immunogen Type        | Peptide  |
| Immunogen Description | Synthetic peptide corresponding to residues near the C terminal of human MOB kinase activator 1A |
| Target Name           | MOB1A  |
| Other Names           | MOB1; MATS1; Mob4B; C2orf6; MOBK1B; MOBKL1B  |
| Accession No.         | Swiss-Prot#: Q9H8S9NCBI Gene ID: 55233Gene Accssion: NP_060691                                   |
| Uniprot               | Q9H8S9   |
| GeneID                | 55233;   |
| SDS-PAGE MW           | 25kd   |
| Concentration         | 1.3mg/ml   |
| Formulation           | Rabbit IgG in pH7.4 PBS, 0.05% NaN <sub>3</sub> , 40% Glycerol.                                  |
| Storage               | Store at -20°C   |

## Application Details

Western blotting: 1:500-1:2000

Immunohistochemistry: 1:25-1:100

## Images



Gel: 10%SDS-PAGE

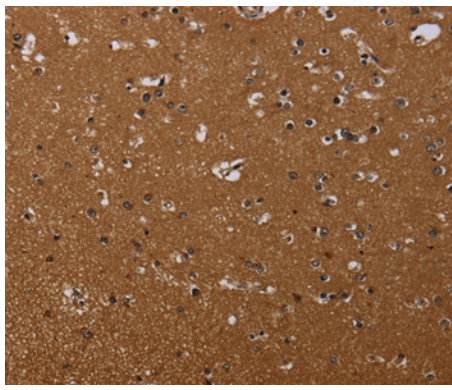
Lysates (from left to right): A375 and K562 cell, mouse liver tissue and Raji cell, Jurkat and Hela cell

Amount of lysate: 40ug per lane

Primary antibody: 1/200 dilution

Secondary antibody dilution: 1/8000

Exposure time: 10 seconds



Immunohistochemical analysis of paraffin-embedded Human liver cancer tissue using #37737 at dilution 1/20.

## Background

MOB1 was first identified in yeast as a protein that binds to Mps with essential roles in the completion of mitosis and the maintenance of ploidy . Its *Drosophila* and mammalian homologs, Mats and MOB1, respectively, are involved in the Hippo signaling tumor suppressor pathway, which plays a critical role in organ size regulation and which has been implicated in cancer development . ?

Note: This product is for in vitro research use only