

MGLL Antibody

Catalog No: #37738

Orders: order@signalwayantibody.comSupport: tech@signalwayantibody.com

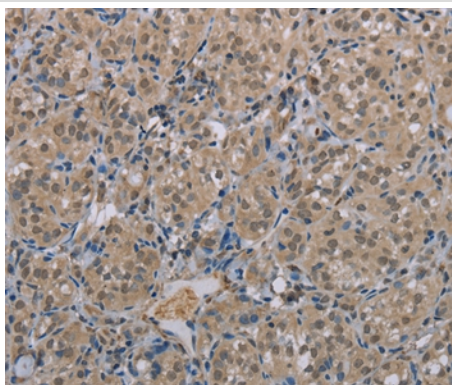
Description

Product Name	MGLL Antibody
Host Species	Rabbit
Clonality	Polyclonal
Purification	Antigen affinity purification.
Applications	IHC
Species Reactivity	Hu
Specificity	The antibody detects endogenous levels of total MGLL protein.
Immunogen Type	Peptide
Immunogen Description	Synthetic peptide corresponding to residues near the N terminal of human monoglyceride lipase
Target Name	MGLL
Other Names	MGL; HUK5; MAGL; HU-K5
Accession No.	Swiss-Prot#: Q99685NCBI Gene ID: 11343Gene Accssion: NP_001003794
Uniprot	Q99685
GeneID	11343;
Concentration	2.3mg/ml
Formulation	Rabbit IgG in pH7.4 PBS, 0.05% NaN ₃ , 40% Glycerol.
Storage	Store at -20°C

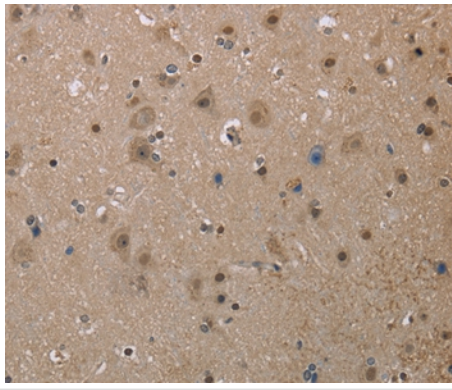
Application Details

Immunohistochemistry: 1:50-1:200

Images



Immunohistochemical analysis of paraffin-embedded Human thyroid cancer tissue using #37738 at dilution 1/40.



Immunohistochemical analysis of paraffin-embedded Human brain tissue using #37738 at dilution 1/40.

Background

This gene encodes a serine hydrolase of the AB hydrolase superfamily that catalyzes the conversion of monoacylglycerides to free fatty acids and glycerol. The encoded protein plays a critical role in several physiological processes including pain and nociception through hydrolysis of the endocannabinoid 2-arachidonoylglycerol. Expression of this gene may play a role in cancer tumorigenesis and metastasis. Alternatively spliced transcript variants encoding multiple isoforms have been observed for this gene.

Note: This product is for in vitro research use only