

MRGPRX1 Antibody

Catalog No: #37739

Orders: order@signalwayantibody.comSupport: tech@signalwayantibody.com

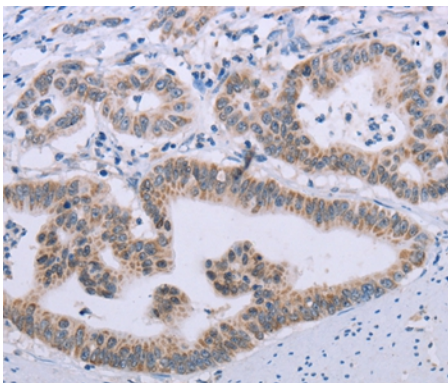
Description

Product Name	MRGPRX1 Antibody
Host Species	Rabbit
Clonality	Polyclonal
Purification	Antigen affinity purification.
Applications	IHC
Species Reactivity	Hu
Specificity	The antibody detects endogenous levels of total MRGPRX1 protein.
Immunogen Type	Peptide
Immunogen Description	Synthetic peptide corresponding to residues near the C terminal of human MAS-related GPR, member X1
Target Name	MRGPRX1
Other Names	GPCR; MGRG2; MRGX1; SNSR4
Accession No.	Swiss-Prot#: Q96LB2NCBI Gene ID: 259249Gene Accssion: NP_671732
Uniprot	Q96LB2
GeneID	259249;
Concentration	0.7mg/ml
Formulation	Rabbit IgG in pH7.4 PBS, 0.05% NaN ₃ , 40% Glycerol.
Storage	Store at -20°C

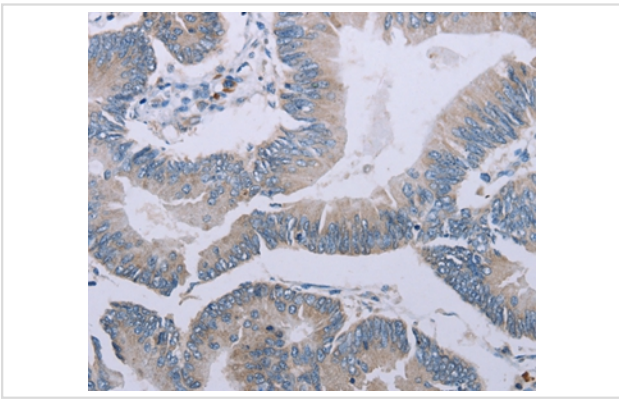
Application Details

Immunohistochemistry: 1:25-1:100

Images



Immunohistochemical analysis of paraffin-embedded Human gastric cancer tissue using #37739 at dilution 1/20.



Immunohistochemical analysis of paraffin-embedded Human colon cancer tissue using #37739 at dilution 1/20.

Background

MRGX1 is an opioid receptor that has been reported exclusively in dorsal root ganglion. MRGX1 is probably involved in the function of nociceptive neurons and may regulate nociceptor function and/or development, including the sensation or modulation of pain. It is potently activated by enkephalins including BAM22 (bovine adrenal medulla peptide 22) and BAM (8-22). BAM22 is the most potent compound and evoked a large and dose-dependent release of intracellular calcium in stably transfected cells.

Note: This product is for in vitro research use only