

MTBP Antibody

Catalog No: #37741

Orders: order@signalwayantibody.comSupport: tech@signalwayantibody.com

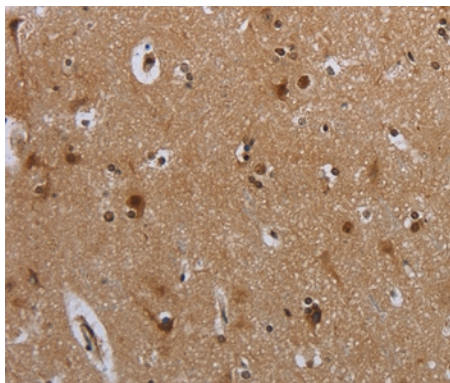
Description

Product Name	MTBP Antibody
Host Species	Rabbit
Clonality	Polyclonal
Purification	Antigen affinity purification.
Applications	IHC
Species Reactivity	Hu
Specificity	The antibody detects endogenous levels of total MTBP protein.
Immunogen Type	Peptide
Immunogen Description	Synthetic peptide corresponding to a region derived from internal residues of human MDM2 binding protein
Target Name	MTBP
Other Names	MDM2BP
Accession No.	Swiss-Prot#: Q96DY7NCBI Gene ID: 27085Gene Accssion: NP_071328
Uniprot	Q96DY7
GeneID	27085;
Concentration	2.7mg/ml
Formulation	Rabbit IgG in pH7.4 PBS, 0.05% NaN ₃ , 40% Glycerol.
Storage	Store at -20°C

Application Details

Immunohistochemistry: 1:50-1:200

Images



Immunohistochemical analysis of paraffin-embedded Human brain tissue using #37741 at dilution 1/40.

Background

This gene encodes a protein that interacts with the oncoprotein mouse double minute 2. The encoded protein regulates progression through the cell cycle and may be involved in tumor formation.

Note: This product is for in vitro research use only