

MYBBP1A Antibody

Catalog No: #37746

Orders: order@signalwayantibody.com

Support: tech@signalwayantibody.com

Description

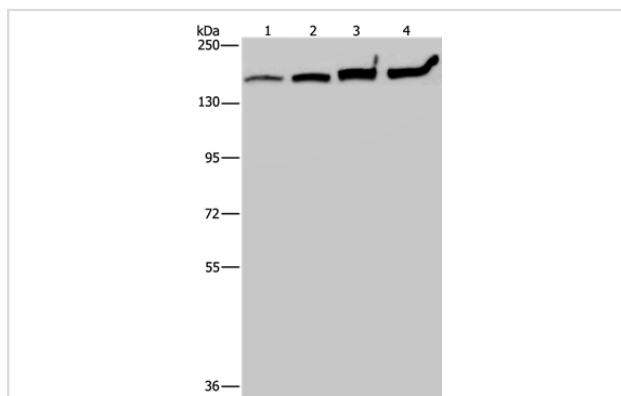
Product Name	MYBBP1A Antibody
Host Species	Rabbit
Clonality	Polyclonal
Purification	Antigen affinity purification.
Applications	WB IHC
Species Reactivity	Hu
Specificity	The antibody detects endogenous levels of total MYBBP1A protein.
Immunogen Type	Peptide
Immunogen Description	Synthetic peptide corresponding to a region derived from internal residues of human MYB binding protein (P160) 1a
Target Name	MYBBP1A
Other Names	P160; PAP2
Accession No.	Swiss-Prot#: Q9BQG0NCBI Gene ID: 10514Gene Accssion: NP_055335
Uniprot	Q9BQG0
GeneID	10514;
SDS-PAGE MW	149kd
Concentration	2.6mg/ml
Formulation	Rabbit IgG in pH7.4 PBS, 0.05% NaN ₃ , 40% Glycerol.
Storage	Store at -20°C

Application Details

Western blotting: 1:200-1:1000

Immunohistochemistry: 1:50-1:200

Images



Gel: 6%SDS-PAGE

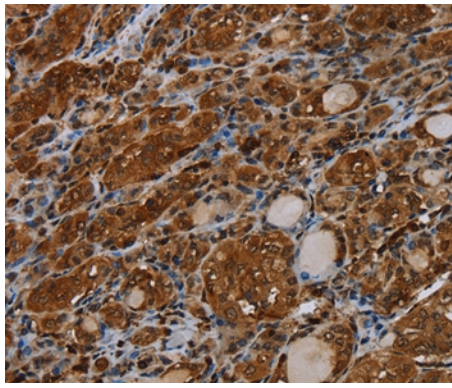
Lysates (from left to right): HT-29, A549, 293T and Hela cell

Amount of lysate: 40ug per lane

Primary antibody: 1/200 dilution

Secondary antibody dilution: 1/8000

Exposure time: 20 seconds



Immunohistochemical analysis of paraffin-embedded Human thyroid cancer tissue using #37746 at dilution 1/40.

Background

This gene encodes a nucleolar transcriptional regulator that was first identified by its ability to bind specifically to the Myb proto-oncogene protein. The encoded protein is thought to play a role in many cellular processes including response to nucleolar stress, tumor suppression and synthesis of ribosomal DNA. Alternate splicing results in multiple transcript variants.

Note: This product is for in vitro research use only