

NLRP6 Antibody

Catalog No: #37752

Orders: order@signalwayantibody.comSupport: tech@signalwayantibody.com

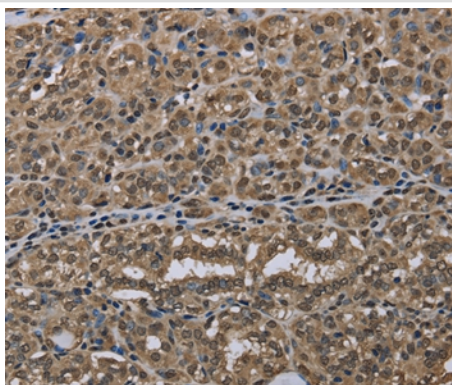
Description

Product Name	NLRP6 Antibody
Host Species	Rabbit
Clonality	Polyclonal
Purification	Antigen affinity purification.
Applications	IHC
Species Reactivity	Hu
Specificity	The antibody detects endogenous levels of total NLRP6 protein.
Immunogen Type	Peptide
Immunogen Description	Synthetic peptide corresponding to a region derived from internal residues of human NLR family, pyrin domain containing 6
Target Name	NLRP6
Other Names	AVR; NAVR; PAN3; NALP6; PYPAF5; CLR11.4; NAVR/AVR
Accession No.	Swiss-Prot#: P59044NCBI Gene ID: 171389Gene Accssion: NP_612202
Uniprot	P59044
GeneID	171389;
Concentration	3mg/ml
Formulation	Rabbit IgG in pH7.4 PBS, 0.05% NaN ₃ , 40% Glycerol.
Storage	Store at -20°C

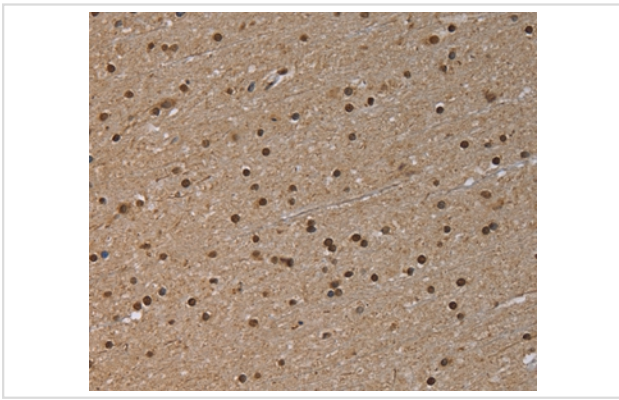
Application Details

Immunohistochemistry: 1:50-1:200

Images



Immunohistochemical analysis of paraffin-embedded Human thyroid cancer tissue using #37752 at dilution 1/50.



Immunohistochemical analysis of paraffin-embedded Human brain tissue using #37752 at dilution 1/50.

Background

The protein encoded by this gene binds arginine-vasopressin and may be involved in the arginine-vasopressin-mediated regulation of renal salt-water balance. The encoded protein also mediates inflammatory responses in the colon to allow recovery from intestinal epithelial damage and protects against tumorigenesis and the development of colitis. Finally, this protein can increase activation of NF-kappa-B, activation of CASP1 through interaction with ASC, and cAMP accumulation. Two transcript variants encoding different isoforms have been found for this gene.

Note: This product is for in vitro research use only