

NCKAP1 Antibody

Catalog No: #37754

Orders: order@signalwayantibody.comSupport: tech@signalwayantibody.com

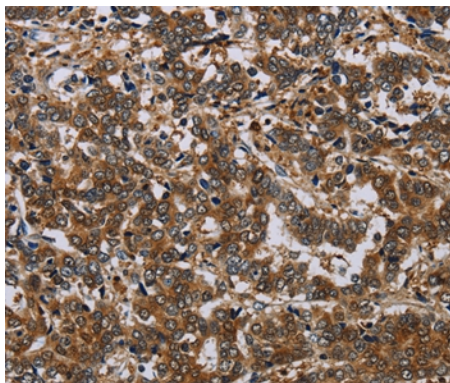
Description

| | |
|-----------------------|--|
| Product Name | NCKAP1 Antibody |
| Host Species | Rabbit |
| Clonality | Polyclonal |
| Purification | Antigen affinity purification. |
| Applications | IHC |
| Species Reactivity | Hu Ms Rt |
| Specificity | The antibody detects endogenous levels of total NCKAP1 protein. |
| Immunogen Type | Peptide |
| Immunogen Description | Synthetic peptide corresponding to a region derived from internal residues of human NCK-associated protein 1 |
| Target Name | NCKAP1 |
| Other Names | HEM2; NAP1; NAP125; p125Nap1 |
| Accession No. | Swiss-Prot#: Q9Y2A7NCBI Gene ID: 10787Gene Accssion: NP_038464 |
| Uniprot | Q9Y2A7 |
| GeneID | 10787; |
| Concentration | 1.9mg/ml |
| Formulation | Rabbit IgG in pH7.4 PBS, 0.05% NaN ₃ , 40% Glycerol. |
| Storage | Store at -20°C |

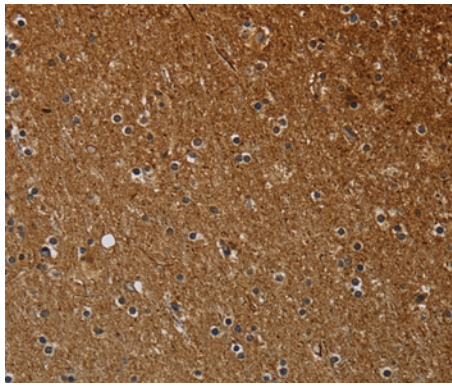
Application Details

Immunohistochemistry: 1:25-1:100

Images



Immunohistochemical analysis of paraffin-embedded Human liver cancer tissue using #37754 at dilution 1/30.



Immunohistochemical analysis of paraffin-embedded Human brain tissue using #37754 at dilution 1/30.

Background

NAP125, also known as NCKAP1 (NCK-associated protein 1), p125Nap1 or membrane-associated protein HEM-2, is a 1,128 amino acid single pass membrane protein that exists as two alternatively spliced isoforms and belongs to the HEM-1/HEM-2 family. While widely expressed, NAP125 is found at highest levels in heart, brain and skeletal muscle where it regulates Rac-dependent actin remodeling as part of a lamellipodial complex with WAVE2, Abi-1 and CYFIP1. NAP125 localizes to the cytoplasmic side of lamellipodium membrane and is encoded by a gene that maps to human chromosome 2q32.1 and mouse chromosome 2 C3. NAP125 expression is markedly reduced in Alzheimer disease (AD)-affected brains, suggesting a possible role in the disease.

Note: This product is for in vitro research use only