

NUCB2 Antibody

Catalog No: #37758

Orders: order@signalwayantibody.com

Support: tech@signalwayantibody.com

Description

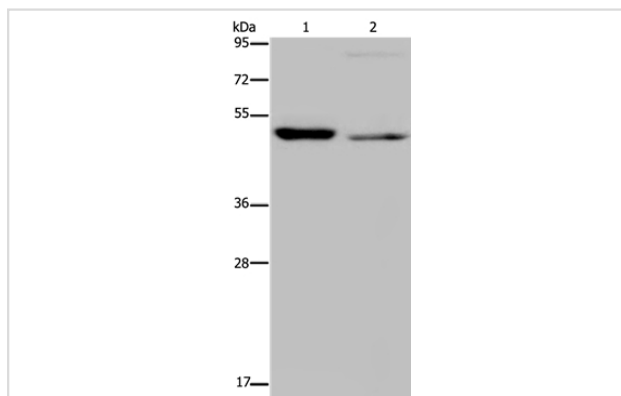
Product Name	NUCB2 Antibody
Host Species	Rabbit
Clonality	Polyclonal
Purification	Antigen affinity purification.
Applications	WB IHC
Species Reactivity	Hu
Specificity	The antibody detects endogenous levels of total NUCB2 protein.
Immunogen Type	Peptide
Immunogen Description	Synthetic peptide corresponding to a region derived from internal residues of human nucleobindin 2
Target Name	NUCB2
Other Names	NEFA; HEL-S-109
Accession No.	Swiss-Prot#: P80303NCBI Gene ID: 4925Gene Accssion: NP_005004
Uniprot	P80303
GeneID	4925;
SDS-PAGE MW	50kd
Concentration	2.6mg/ml
Formulation	Rabbit IgG in pH7.4 PBS, 0.05% NaN ₃ , 40% Glycerol.
Storage	Store at -20°C

Application Details

Western blotting: 1:200-1:1000

Immunohistochemistry: 1:50-1:200

Images



Gel: 8%SDS-PAGE

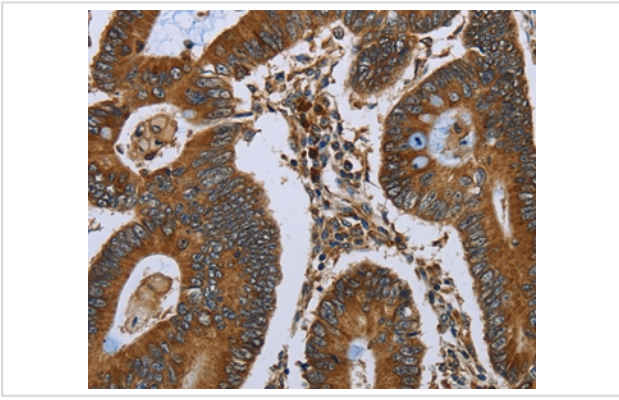
Lysates (from left to right): Human testis tissue and HeLa cell

Amount of lysate: 40ug per lane

Primary antibody: 1/300 dilution

Secondary antibody dilution: 1/8000

Exposure time: 2 minutes



Immunohistochemical analysis of paraffin-embedded Human colon cancer tissue using #37758 at dilution 1/40.

Background

This gene encodes a protein with a suggested role in calcium level maintenance, eating regulation in the hypothalamus, and release of tumor necrosis factor from vascular endothelial cells. This protein binds calcium and has EF-folding domains.

Note: This product is for in vitro research use only