

## NEFM Antibody

Catalog No: #37760

Orders: [order@signalwayantibody.com](mailto:order@signalwayantibody.com)Support: [tech@signalwayantibody.com](mailto:tech@signalwayantibody.com)

## Description

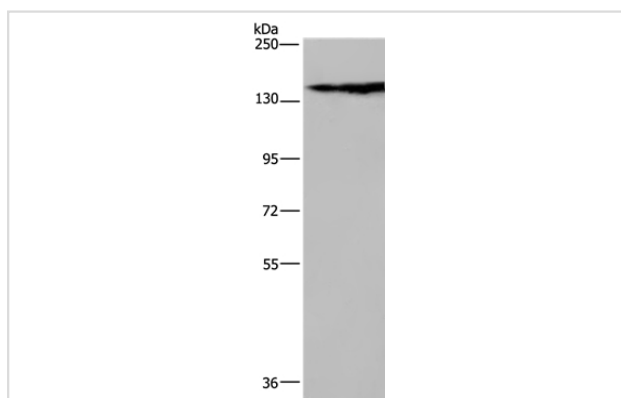
Product Name	NEFM Antibody
Host Species	Rabbit
Clonality	Polyclonal
Purification	Antigen affinity purification.
Applications	WB IHC
Species Reactivity	Hu
Specificity	The antibody detects endogenous levels of total NEFM protein.
Immunogen Type	Peptide
Immunogen Description	Synthetic peptide corresponding to residues near the C terminal of human neurofilament, medium polypeptide
Target Name	NEFM
Other Names	NFM; NEF3; NF-M
Accession No.	Swiss-Prot#: P07197NCBI Gene ID: 4741Gene Accssion: NP_005373
Uniprot	P07197
GeneID	4741;
SDS-PAGE MW	102kd
Concentration	1.1mg/ml
Formulation	Rabbit IgG in pH7.4 PBS, 0.05% NaN <sub>3</sub> , 40% Glycerol.
Storage	Store at -20°C

## Application Details

Western blotting: 1:200-1:1000

Immunohistochemistry: 1:25-1:100

## Images



Gel: 6%SDS-PAGE

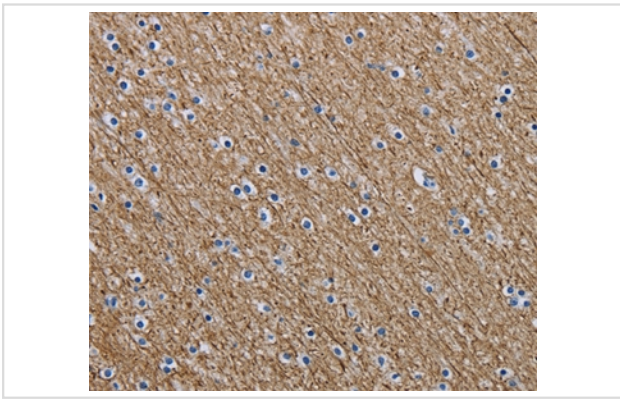
Lysates (from left to right): Human brain malignant glioma tissue

Amount of lysate: 40ug per lane

Primary antibody: 1/150 dilution

Secondary antibody dilution: 1/8000

Exposure time: 1 minutes



Immunohistochemical analysis of paraffin-embedded Human brain tissue using #37760 at dilution 1/20.

## Background

Neurofilaments are type IV intermediate filament heteropolymers composed of light, medium, and heavy chains. Neurofilaments comprise the axoskeleton and functionally maintain neuronal caliber. They may also play a role in intracellular transport to axons and dendrites. This gene encodes the medium neurofilament protein. This protein is commonly used as a biomarker of neuronal damage. Alternative splicing results in multiple transcript variants encoding distinct isoforms.?

Note: This product is for in vitro research use only