

CCL1 Antibody

Catalog No: #37765

Orders: order@signalwayantibody.comSupport: tech@signalwayantibody.com

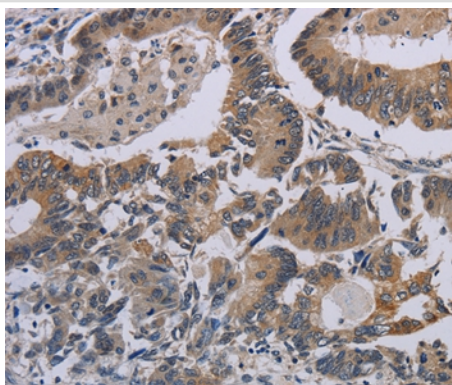
Description

Product Name	CCL1 Antibody
Host Species	Rabbit
Clonality	Polyclonal
Purification	Antigen affinity purification.
Applications	IHC
Species Reactivity	Hu
Specificity	The antibody detects endogenous levels of total CCL1 protein.
Immunogen Type	Peptide
Immunogen Description	Synthetic peptide corresponding to a region derived from internal residues of human chemokine (C-C motif) ligand 1
Target Name	CCL1
Other Names	P500; SISe; TCA3; I-309; SCYA1
Accession No.	Swiss-Prot#: P22362NCBI Gene ID: 6346Gene Accssion: NP_002972
Uniprot	P22362
GeneID	6346;
Concentration	3.1mg/ml
Formulation	Rabbit IgG in pH7.4 PBS, 0.05% NaN ₃ , 40% Glycerol.
Storage	Store at -20°C

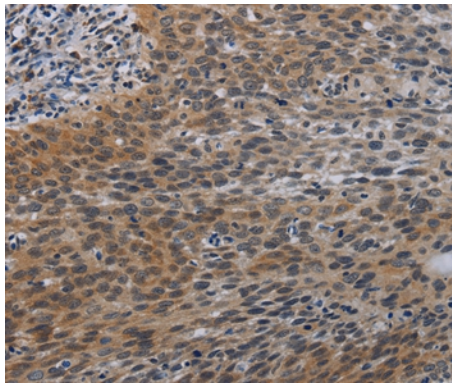
Application Details

Immunohistochemistry: 1:50-1:200

Images



Immunohistochemical analysis of paraffin-embedded Human colon cancer tissue using #37765 at dilution 1/50.



Immunohistochemical analysis of paraffin-embedded Human cervical cancer tissue using #37765 at dilution 1/50.

Background

This gene is one of several chemokine genes clustered on the q-arm of chromosome 17. Chemokines form a superfamily of secreted proteins involved in immunoregulatory and inflammatory processes. The superfamily is divided into four subfamilies based on the arrangement of the N-terminal cysteine residues of the mature peptide. This chemokine, a member of the CC subfamily, is secreted by activated T cells and displays chemotactic activity for monocytes but not for neutrophils. It binds to the chemokine (C-C motif) receptor 8.

Note: This product is for in vitro research use only