

NLRP9 Antibody

Catalog No: #37768

Orders: order@signalwayantibody.comSupport: tech@signalwayantibody.com

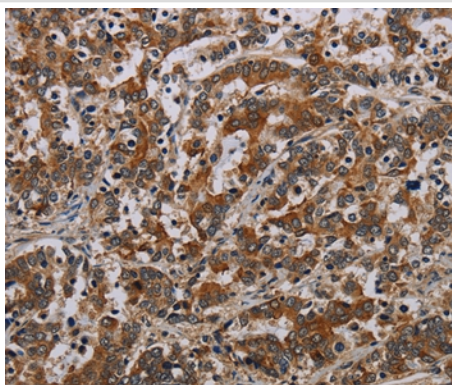
Description

Product Name	NLRP9 Antibody
Host Species	Rabbit
Clonality	Polyclonal
Purification	Antigen affinity purification.
Applications	IHC
Species Reactivity	Hu
Specificity	The antibody detects endogenous levels of total NLRP9 protein.
Immunogen Type	Peptide
Immunogen Description	Synthetic peptide corresponding to residues near the N terminal of human NLR family, pyrin domain containing 9
Target Name	NLRP9
Other Names	NOD6; NALP9; PAN12; CLR19.1
Accession No.	Swiss-Prot#: Q7RTR0NCBI Gene ID: 338321Gene Accssion: NP_789790
Uniprot	Q7RTR0
GeneID	338321;
Concentration	2.6mg/ml
Formulation	Rabbit IgG in pH7.4 PBS, 0.05% NaN ₃ , 40% Glycerol.
Storage	Store at -20°C

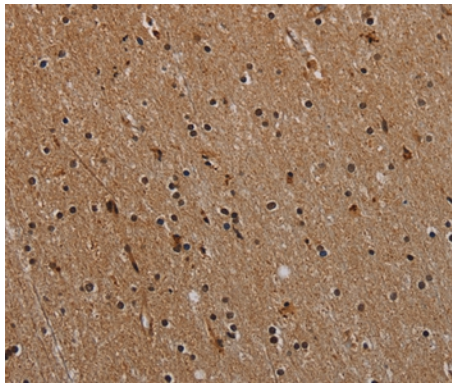
Application Details

Immunohistochemistry: 1:50-1:200

Images



Immunohistochemical analysis of paraffin-embedded Human liver cancer tissue using #37768 at dilution 1/40.



Immunohistochemical analysis of paraffin-embedded Human brain tissue using #37768 at dilution 1/40.

Background

The protein encoded by this gene belongs to the NALP protein family. Members of the NALP protein family typically contain a NACHT domain, a NACHT-associated domain (NAD), a C-terminal leucine-rich repeat (LRR) region, and an N-terminal pyrin domain (PYD). This protein may play a regulatory role in the innate immune system as similar family members belong to the signal-induced multiprotein complex, the inflammasome, that activates the pro-inflammatory caspases, caspase-1 and caspase-5.

Note: This product is for in vitro research use only