

## NPTX1 Antibody

Catalog No: #37776

Orders: [order@signalwayantibody.com](mailto:order@signalwayantibody.com)Support: [tech@signalwayantibody.com](mailto:tech@signalwayantibody.com)

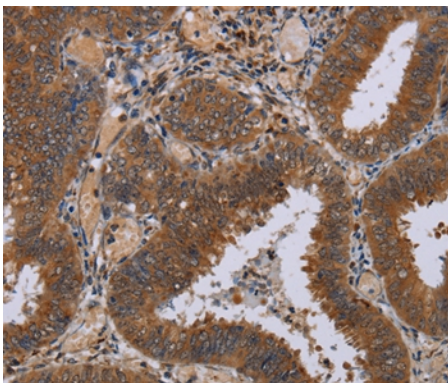
## Description

Product Name	NPTX1 Antibody
Host Species	Rabbit
Clonality	Polyclonal
Purification	Antigen affinity purification.
Applications	IHC
Species Reactivity	Hu
Specificity	The antibody detects endogenous levels of total NPTX1 protein.
Immunogen Type	Peptide
Immunogen Description	Synthetic peptide corresponding to a region derived from internal residues of human neuronal pentraxin I
Target Name	NPTX1
Other Names	NP1
Accession No.	Swiss-Prot#: Q15818NCBI Gene ID: 4884Gene Accssion: NP_002513
Uniprot	Q15818
GeneID	4884;
Concentration	2.9mg/ml
Formulation	Rabbit IgG in pH7.4 PBS, 0.05% NaN <sub>3</sub> , 40% Glycerol.
Storage	Store at -20°C

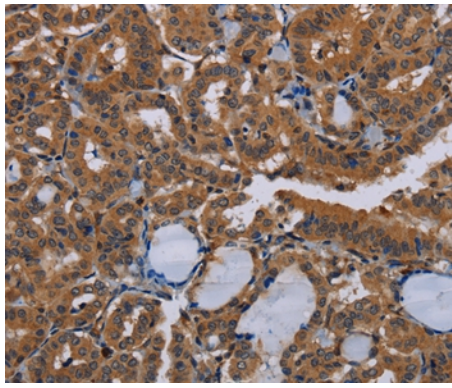
## Application Details

Immunohistochemistry: 1:50-1:200

## Images



Immunohistochemical analysis of paraffin-embedded Human colon cancer tissue using #37776 at dilution 1/50.



Immunohistochemical analysis of paraffin-embedded Human thyroid cancer tissue using #37776 at dilution 1/50.

## Background

NPTX1 is a member of the neuronal pentraxin gene family. Neuronal pentraxin 1 is similar to the rat NP1 gene which encodes a binding protein for the snake venom toxin taipoxin. Human NPTX1 mRNA is exclusively localized to the nervous system.

Note: This product is for in vitro research use only