

NRAS Antibody

Catalog No: #37777

Orders: order@signalwayantibody.comSupport: tech@signalwayantibody.com

Description

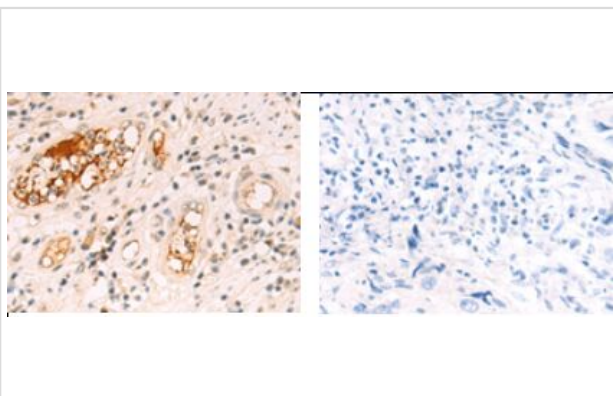
Product Name	NRAS Antibody
Host Species	Rabbit
Clonality	Polyclonal
Purification	Antigen affinity purification.
Applications	WB IHC
Species Reactivity	Human, Mouse, Rat
Specificity	The antibody detects endogenous levels of total NRAS protein.
Immunogen Type	Peptide
Immunogen Description	Synthetic peptide corresponding to residues near the C terminal of human neuroblastoma RAS viral (v-ras) oncogene homolog
Target Name	NRAS
Other Names	NS6; ALPS4; N-ras; NRAS1
Accession No.	Swiss-Prot#: P01111NCBI Gene ID: 4893Gene Accssion: NP_002515
Uniprot	P01111
GeneID	4893;
SDS-PAGE MW	21kd
Concentration	0.6 mg/ml
Formulation	Rabbit IgG in pH7.4 PBS, 0.05% NaN ₃ , 40% Glycerol.
Storage	Store at -20°C

Application Details

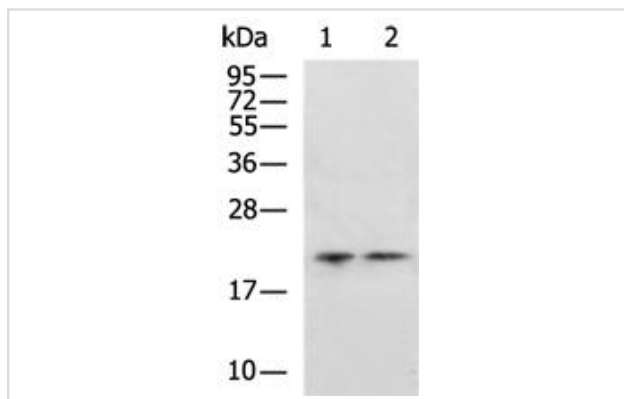
Western blotting: 1:200-1:1000

Immunohistochemistry: 1:50-1:100

Images



The image on the left is immunohistochemistry of paraffin-embedded Human cervical cancer tissue using NRAS Antibody at dilution 1/50, on the right is treated with synthetic peptide. (Original magnification: $\times 200$)



Gel: 12%SDS-PAGE
Lysate: 40 μ g
Lane 1-2: Jurkat, 293T cell lysates
Primary antibody: NRAS Antibody at dilution 1/200
Secondary antibody: Goat anti rabbit IgG at 1/5000 dilution
Exposure time: 2 minutes

Background

This is an N-ras oncogene encoding a membrane protein that shuttles between the Golgi apparatus and the plasma membrane. This shuttling is regulated through palmitoylation and depalmitoylation by the ZDHHC9-GOLGA7 complex. The encoded protein, which has intrinsic GTPase activity, is activated by a guanine nucleotide-exchange factor and inactivated by a GTPase activating protein. Mutations in this gene have been associated with somatic rectal cancer, follicular thyroid cancer, autoimmune lymphoproliferative syndrome, Noonan syndrome, and juvenile myelomonocytic leukemia.

Note: This product is for in vitro research use only