

SH2D3A Antibody

Catalog No: #37779

Orders: order@signalwayantibody.comSupport: tech@signalwayantibody.com

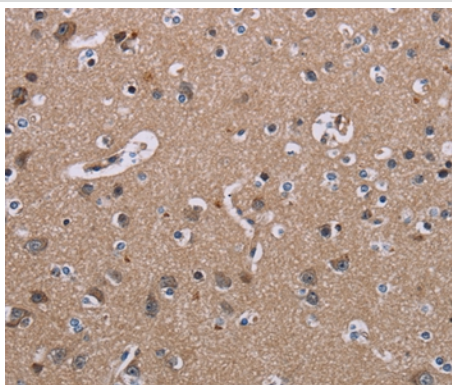
Description

Product Name	SH2D3A Antibody
Host Species	Rabbit
Clonality	Polyclonal
Purification	Antigen affinity purification.
Applications	IHC
Species Reactivity	Hu
Specificity	The antibody detects endogenous levels of total SH2D3A protein.
Immunogen Type	Peptide
Immunogen Description	Synthetic peptide corresponding to residues near the C terminal of human SH2 domain containing 3A
Target Name	SH2D3A
Other Names	NSP1
Accession No.	Swiss-Prot#: Q9BRG2NCBI Gene ID: 10045Gene Accssion: NP_005481
Uniprot	Q9BRG2
GeneID	10045;
Concentration	2.8mg/ml
Formulation	Rabbit IgG in pH7.4 PBS, 0.05% NaN ₃ , 40% Glycerol.
Storage	Store at -20°C

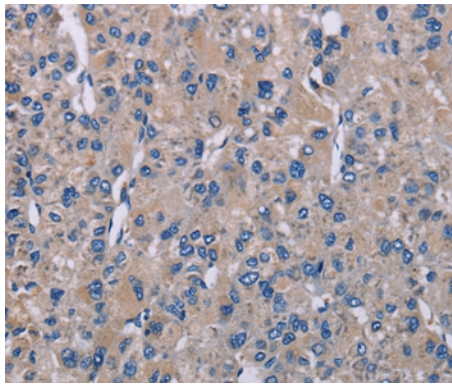
Application Details

Immunohistochemistry: 1:25-1:100

Images



Immunohistochemical analysis of paraffin-embedded Human brain tissue using #37779 at dilution 1/40.



Immunohistochemical analysis of paraffin-embedded Human liver cancer tissue using #37779 at dilution 1/40.

Background

SH2D3A (SH2 domain containing 3A), also known as novel SH2-containing protein 1, is a 576 amino acid protein that is thought to play a role in JNK activation. SH2D3A interacts with p130 Cas and is found at low levels in fetal kidney, fetal lung, placenta, adult pancreas, kidney and lung. Subject to post-translational phosphorylation on multiple tyrosine residues, SH2D3A contains one Src homology 2 (SH2) domain. SH2 domains bind to tyrosine-phosphorylated regions of target proteins, frequently linking activated growth factors to putative signal transduction proteins.

Note: This product is for in vitro research use only