

MED12 Antibody

Catalog No: #37786

Orders: order@signalwayantibody.comSupport: tech@signalwayantibody.com

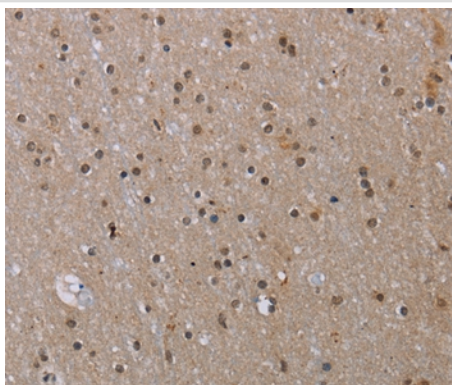
Description

Product Name	MED12 Antibody
Host Species	Rabbit
Clonality	Polyclonal
Purification	Antigen affinity purification.
Applications	IHC
Species Reactivity	Hu Ms
Specificity	The antibody detects endogenous levels of total MED12 protein.
Immunogen Type	Peptide
Immunogen Description	Synthetic peptide corresponding to a region derived from internal residues of human mediator complex subunit 12
Target Name	MED12
Other Names	OKS; FGS1; HOPA; OPA1; OHDOX; ARC240; CAGH45; MED12S; TNRC11; TRAP230
Accession No.	Swiss-Prot#: Q93074NCBI Gene ID: 9968Gene Accssion: NP_005111
Uniprot	Q93074
GeneID	9968;
Concentration	1.7mg/ml
Formulation	Rabbit IgG in pH7.4 PBS, 0.05% NaN ₃ , 40% Glycerol.
Storage	Store at -20°C

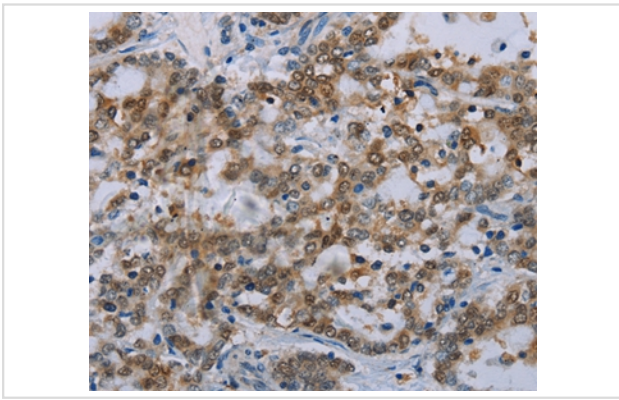
Application Details

Immunohistochemistry: 1:50-1:200

Images



Immunohistochemical analysis of paraffin-embedded Human liver cancer tissue using #37786 at dilution 1/40.



Immunohistochemical analysis of paraffin-embedded Human brain tissue using #37786 at dilution 1/40.

Background

The initiation of transcription is controlled in part by a large protein assembly known as the preinitiation complex. A component of this preinitiation complex is a 1.2 MDa protein aggregate called Mediator. This Mediator component binds with a CDK8 subcomplex which contains the protein encoded by this gene, mediator complex subunit 12 (MED12), along with MED13, CDK8 kinase, and cyclin C.?

Note: This product is for in vitro research use only