

## PAGE4 Antibody

Catalog No: #37793

Orders: [order@signalwayantibody.com](mailto:order@signalwayantibody.com)Support: [tech@signalwayantibody.com](mailto:tech@signalwayantibody.com)

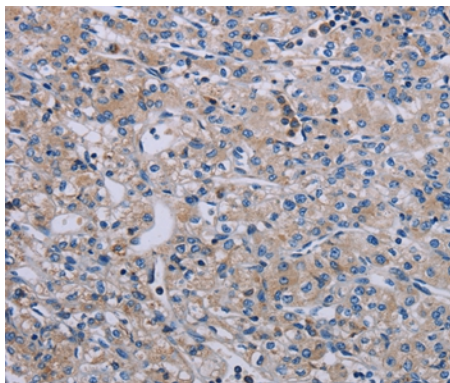
## Description

Product Name	PAGE4 Antibody
Host Species	Rabbit
Clonality	Polyclonal
Purification	Antigen affinity purification.
Applications	IHC
Species Reactivity	Hu
Specificity	The antibody detects endogenous levels of total PAGE4 protein.
Immunogen Type	Peptide
Immunogen Description	Synthetic peptide corresponding to residues near the C terminal of human P antigen family, member 4
Target Name	PAGE4
Other Names	JM27; JM-27; CT16.7; GAGE-9; GAGEC1; PAGE-1; PAGE-4
Accession No.	Swiss-Prot#: O60829NCBI Gene ID: 9506Gene Accssion: NP_008934
Uniprot	O60829
GeneID	9506;
Concentration	2.1mg/ml
Formulation	Rabbit IgG in pH7.4 PBS, 0.05% NaN <sub>3</sub> , 40% Glycerol.
Storage	Store at -20°C

## Application Details

Immunohistochemistry: 1:25-1:100

## Images



Immunohistochemical analysis of paraffin-embedded Human prostate cancer tissue using #37793 at dilution 1/40.

## Background

This gene is a member of the GAGE family. The GAGE genes are expressed in a variety of tumors and in some fetal and reproductive tissues. This gene is strongly expressed in prostate and prostate cancer. It is also expressed in other male and female reproductive tissues including testis, fallopian tube, uterus, and placenta, as well as in testicular cancer and uterine cancer. The protein encoded by this gene shares sequence similarity with other GAGE/PAGE proteins, and also belongs to a family of CT (cancer-testis) antigens.

---

Note: This product is for in vitro research use only