

## F2RL2 Antibody

Catalog No: #37795

Orders: [order@signalwayantibody.com](mailto:order@signalwayantibody.com)Support: [tech@signalwayantibody.com](mailto:tech@signalwayantibody.com)

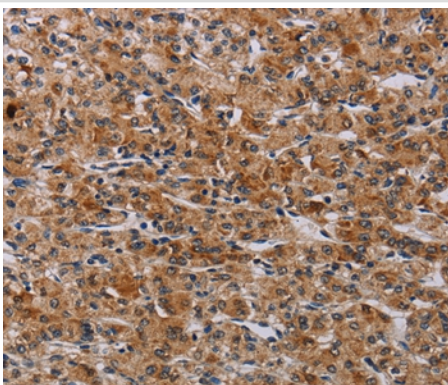
## Description

Product Name	F2RL2 Antibody
Host Species	Rabbit
Clonality	Polyclonal
Purification	Antigen affinity purification.
Applications	IHC
Species Reactivity	Hu
Specificity	The antibody detects endogenous levels of total F2RL2 protein.
Immunogen Type	Peptide
Immunogen Description	Synthetic peptide corresponding to a region derived from internal residues of human coagulation factor II (thrombin) receptor-like 2
Target Name	F2RL2
Other Names	PAR3; PAR-3
Accession No.	Swiss-Prot#: O00254NCBI Gene ID: 2151Gene Accssion: NP_004092
Uniprot	O00254
GeneID	2151;
Concentration	2mg/ml
Formulation	Rabbit IgG in pH7.4 PBS, 0.05% NaN <sub>3</sub> , 40% Glycerol.
Storage	Store at -20°C

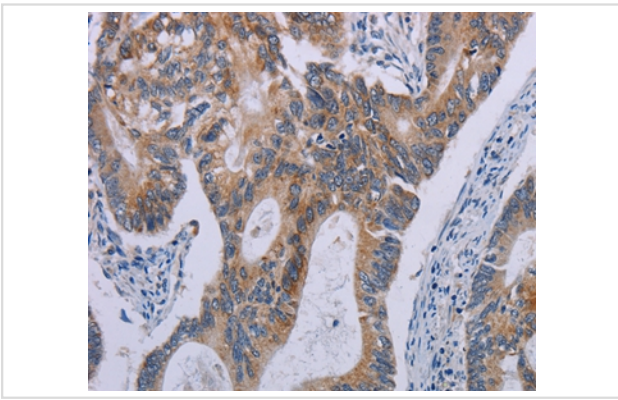
## Application Details

Immunohistochemistry: 1:25-1:100

## Images



Immunohistochemical analysis of paraffin-embedded Human prostate cancer tissue using #37795 at dilution 1/30.



Immunohistochemical analysis of paraffin-embedded Human colon cancer tissue using #37795 at dilution 1/30.

## Background

This gene encodes a member of the protease-activated receptor (PAR) family which is a subfamily of the seven transmembrane G protein-coupled cell surface receptor family. The encoded protein acts as a cofactor in the thrombin-mediated cleavage and activation of the protease-activated receptor family member PAR4. The encoded protein plays an essential role in hemostasis and thrombosis. Alternate splicing results in multiple transcript variants that encode different isoforms.

Note: This product is for in vitro research use only