

PARP4 Antibody

Catalog No: #37796

Orders: order@signalwayantibody.comSupport: tech@signalwayantibody.com

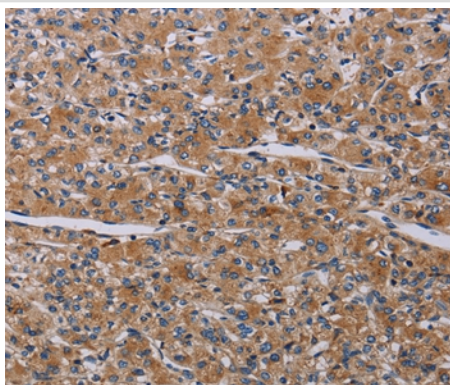
Description

Product Name	PARP4 Antibody
Host Species	Rabbit
Clonality	Polyclonal
Purification	Antigen affinity purification.
Applications	IHC
Species Reactivity	Hu
Specificity	The antibody detects endogenous levels of total PARP4 protein.
Immunogen Type	Peptide
Immunogen Description	Synthetic peptide corresponding to a region derived from internal residues of human poly (ADP-ribose) polymerase family, member 4
Target Name	PARP4
Other Names	PH5P; p193; ARTD4; PARPL; VPARP; VWA5C; PARP-4; VAULT3; ADPRTL1
Accession No.	Swiss-Prot#: Q9UUKK3NCBI Gene ID: 143Gene Accssion: NP_006428
Uniprot	Q9UUKK3
GeneID	143;
Concentration	1.4mg/ml
Formulation	Rabbit IgG in pH7.4 PBS, 0.05% NaN ₃ , 40% Glycerol.
Storage	Store at -20°C

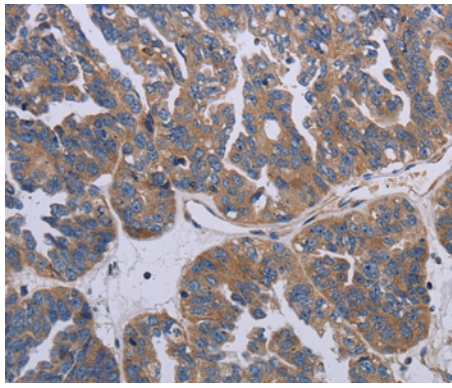
Application Details

Immunohistochemistry: 1:25-1:100

Images



Immunohistochemical analysis of paraffin-embedded Human prostate cancer tissue using #37796 at dilution 1/20.



Immunohistochemical analysis of paraffin-embedded Human ovarian cancer tissue using #37796 at dilution 1/20.

Background

This gene encodes poly(ADP-ribosyl)transferase-like 1 protein, which is capable of catalyzing a poly(ADP-ribosyl)ation reaction. This protein has a catalytic domain which is homologous to that of poly (ADP-ribosyl) transferase, but lacks an N-terminal DNA binding domain which activates the C-terminal catalytic domain of poly (ADP-ribosyl) transferase. Since this protein is not capable of binding DNA directly, its transferase activity may be activated by other factors such as protein-protein interaction mediated by the extensive carboxyl terminus.?

Note: This product is for in vitro research use only