

PCDHAC1 Antibody

Catalog No: #37802

Orders: order@signalwayantibody.com

Support: tech@signalwayantibody.com

Description

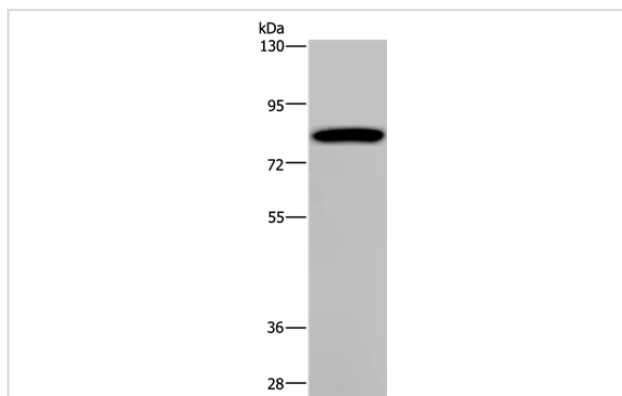
Product Name	PCDHAC1 Antibody
Host Species	Rabbit
Clonality	Polyclonal
Purification	Antigen affinity purification.
Applications	WB IHC
Species Reactivity	Hu
Specificity	The antibody detects endogenous levels of total PCDHAC1 protein.
Immunogen Type	Peptide
Immunogen Description	Synthetic peptide corresponding to a region derived from internal residues of human protocadherin alpha subfamily C, 1
Target Name	PCDHAC1
Other Names	PCDH-ALPHA-C1
Accession No.	Swiss-Prot#: Q9H158NCBI Gene ID: 56135Gene Accssion: NP_061721
Uniprot	Q9H158
GeneID	56135;
SDS-PAGE MW	104kd
Concentration	3.2mg/ml
Formulation	Rabbit IgG in pH7.4 PBS, 0.05% NaN ₃ , 40% Glycerol.
Storage	Store at -20°C

Application Details

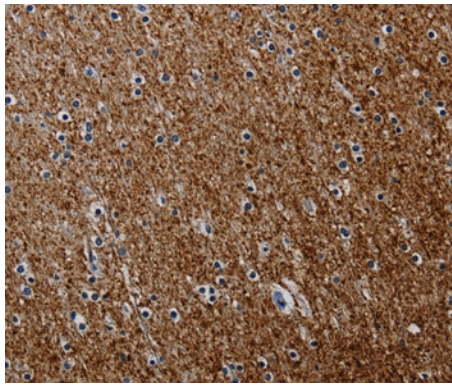
Western blotting: 1:200-1:1000

Immunohistochemistry: 1:50-1:200

Images



Gel: 6%SDS-PAGE
 Lysate: 40ug K562 cell
 Primary antibody: 1/200 dilution
 Secondary antibody dilution: 1/8000
 Exposure time: 1 minute



Immunohistochemical analysis of paraffin-embedded Human brain tissue using #37802 at dilution 1/50.

Background

This gene is a member of the protocadherin alpha gene cluster, one of three related gene clusters tandemly linked on chromosome five that demonstrate an unusual genomic organization similar to that of B-cell and T-cell receptor gene clusters. The alpha gene cluster is composed of 15 cadherin superfamily genes related to the mouse CNR genes and consists of 13 highly similar and 2 more distantly related coding sequences.

Note: This product is for in vitro research use only