

IVL Antibody

Catalog No: #37804

Orders: order@signalwayantibody.comSupport: tech@signalwayantibody.com

Description

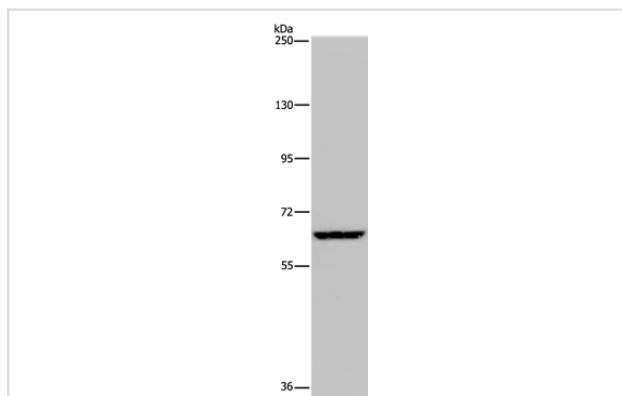
Product Name	IVL Antibody
Host Species	Rabbit
Clonality	Polyclonal
Purification	Antigen affinity purification.
Applications	WB IHC
Species Reactivity	Hu
Specificity	The antibody detects endogenous levels of total IVL protein.
Immunogen Type	Peptide
Immunogen Description	Synthetic peptide corresponding to a region derived from internal residues of human involucrin
Target Name	IVL
Other Names	INVO; Involucrin; IVL
Accession No.	Swiss-Prot#: P07476NCBI Gene ID: 3713Gene Accssion: NP_005538
Uniprot	P07476
GeneID	3713;
SDS-PAGE MW	68kd
Concentration	3.2mg/ml
Formulation	Rabbit IgG in pH7.4 PBS, 0.05% NaN ₃ , 40% Glycerol.
Storage	Store at -20°C

Application Details

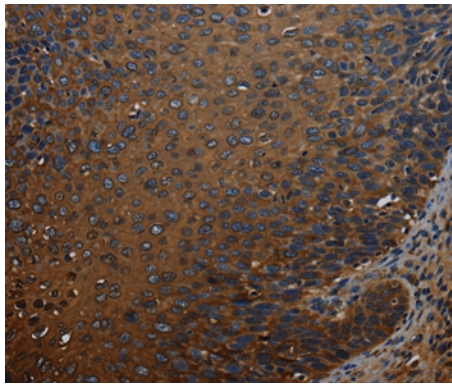
Western blotting: 1:200-1:1000

Immunohistochemistry: 1:50-1:200

Images



Gel: 6%SDS-PAGE
Lysate: 40ug Hela cell
Primary antibody: 1/200 dilution
Secondary antibody dilution: 1/8000
Exposure time: 20 seconds



Immunohistochemical analysis of paraffin-embedded Human cervical cancer tissue using #37804 at dilution 1/50.

Background

Involucrin, a component of the keratinocyte crosslinked envelope, is found in the cytoplasm and crosslinked to membrane proteins by transglutaminase. This gene is mapped to 1q21, among calpactin I light chain, trichohyalin, profillaggrin, loricrin, and calcyclin.

Note: This product is for in vitro research use only