

PCDHB15 Antibody

Catalog No: #37807

Orders: order@signalwayantibody.comSupport: tech@signalwayantibody.com

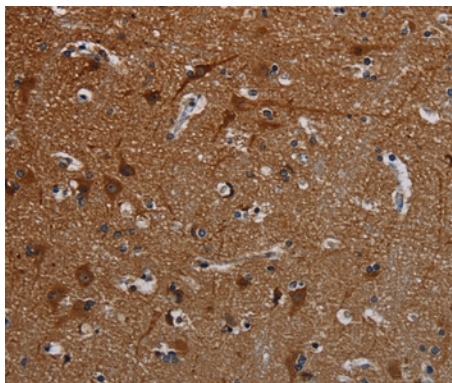
Description

Product Name	PCDHB15 Antibody
Host Species	Rabbit
Clonality	Polyclonal
Purification	Antigen affinity purification.
Applications	IHC
Species Reactivity	Hu
Specificity	The antibody detects endogenous levels of total PCDHB15 protein.
Immunogen Type	Peptide
Immunogen Description	Synthetic peptide corresponding to a region derived from internal residues of human protocadherin beta 15
Target Name	PCDHB15
Other Names	PCDH-BETA15
Accession No.	Swiss-Prot#: Q9Y5E8NCBI Gene ID: 56121Gene Accssion: NP_061758
Uniprot	Q9Y5E8
GeneID	56121;
Concentration	2.9mg/ml
Formulation	Rabbit IgG in pH7.4 PBS, 0.05% NaN ₃ , 40% Glycerol.
Storage	Store at -20°C

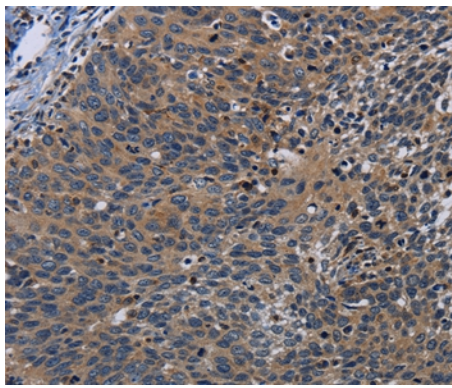
Application Details

Immunohistochemistry: 1:50-1:200

Images



Immunohistochemical analysis of paraffin-embedded Human brain tissue using #37807 at dilution 1/50.



Immunohistochemical analysis of paraffin-embedded Human cervical cancer tissue using #37807 at dilution 1/50.

Background

This gene is a member of the protocadherin beta gene cluster, one of three related gene clusters tandemly linked on chromosome five. The gene clusters demonstrate an unusual genomic organization similar to that of B-cell and T-cell receptor gene clusters. The beta cluster contains 16 genes and 3 pseudogenes, each encoding 6 extracellular cadherin domains and a cytoplasmic tail that deviates from others in the cadherin superfamily. The extracellular domains interact in a homophilic manner to specify differential cell-cell connections.

Note: This product is for in vitro research use only