

## PDE5A Antibody

Catalog No: #37810

Orders: [order@signalwayantibody.com](mailto:order@signalwayantibody.com)Support: [tech@signalwayantibody.com](mailto:tech@signalwayantibody.com)

## Description

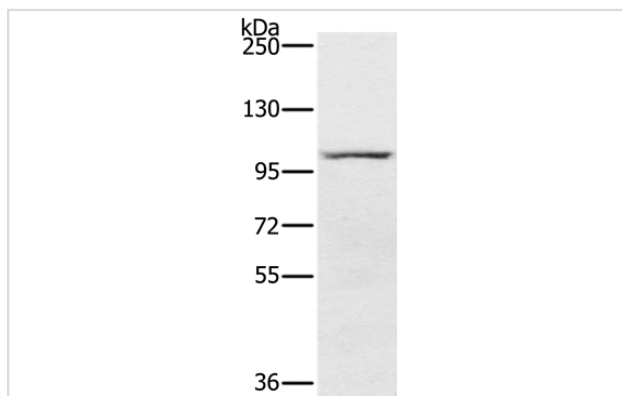
Product Name	PDE5A Antibody
Host Species	Rabbit
Clonality	Polyclonal
Purification	Antigen affinity purification.
Applications	WB IHC
Species Reactivity	Hu
Specificity	The antibody detects endogenous levels of total PDE5A protein.
Immunogen Type	Peptide
Immunogen Description	Synthetic peptide corresponding to a region derived from internal residues of human phosphodiesterase 5A, cGMP-specific
Target Name	PDE5A
Other Names	CN5A; PDE5; CGB-PDE
Accession No.	Swiss-Prot#: O76074NCBI Gene ID: 8654Gene Accssion: NP_001074/O76074
Uniprot	O76074
GeneID	8654;
SDS-PAGE MW	100kd
Concentration	0.5mg/ml
Formulation	Rabbit IgG in pH7.4 PBS, 0.05% NaN <sub>3</sub> , 40% Glycerol.
Storage	Store at -20°C

## Application Details

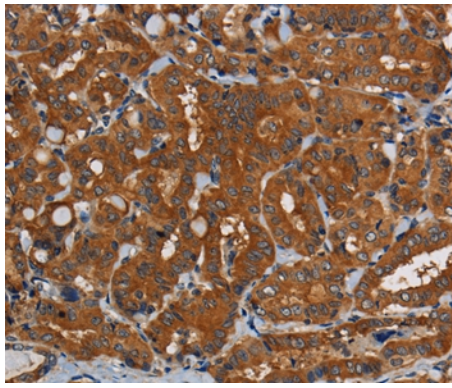
Western blotting: 1:200-1:1000

Immunohistochemistry: 1:100-1:300

## Images



Gel: 6%SDS-PAGE  
Lysate: 40ug 293T cell  
Primary antibody: 1/200 dilution  
Secondary antibody dilution: 1/8000  
Exposure time: 2 minutes



Immunohistochemical analysis of paraffin-embedded Human thyroid cancer tissue using #37810 at dilution 1/50.

## Background

This gene encodes a cGMP-binding, cGMP-specific phosphodiesterase, a member of the cyclic nucleotide phosphodiesterase family. This phosphodiesterase specifically hydrolyzes cGMP to 5'-GMP. It is involved in the regulation of intracellular concentrations of cyclic nucleotides and is important for smooth muscle relaxation in the cardiovascular system. Alternative splicing of this gene results in three transcript variants encoding distinct isoforms.?

Note: This product is for in vitro research use only