

PER2 Antibody

Catalog No: #37814

Orders: order@signalwayantibody.comSupport: tech@signalwayantibody.com

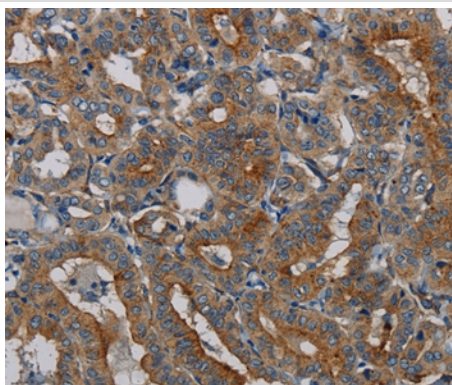
Description

Product Name	PER2 Antibody
Host Species	Rabbit
Clonality	Polyclonal
Purification	Antigen affinity purification.
Applications	IHC
Species Reactivity	Hu
Specificity	The antibody detects endogenous levels of total PER2 protein.
Immunogen Type	Peptide
Immunogen Description	Synthetic peptide corresponding to a region derived from internal residues of human period circadian clock 2
Target Name	PER2
Other Names	FASPS; FASPS1
Accession No.	Swiss-Prot#: O15055NCBI Gene ID: 8864Gene Accssion: NP_073728/O15055
Uniprot	O15055
GeneID	8864;
Concentration	2.9mg/ml
Formulation	Rabbit IgG in pH7.4 PBS, 0.05% NaN ₃ , 40% Glycerol.
Storage	Store at -20°C

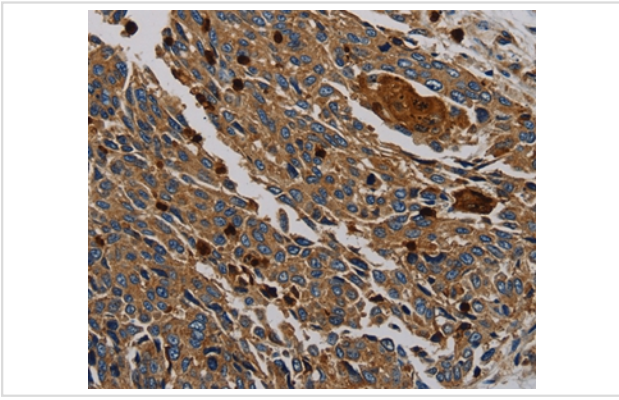
Application Details

Immunohistochemistry: 1:100-1:300

Images



Immunohistochemical analysis of paraffin-embedded Human thyroid cancer tissue using #37814 at dilution 1/50.



Immunohistochemical analysis of paraffin-embedded Human lung cancer tissue using #37814 at dilution 1/50.

Background

This gene is a member of the Period family of genes and is expressed in a circadian pattern in the suprachiasmatic Nucleus, the primary circadian pacemaker in the mammalian brain. Genes in this family encode components of the circadian rhythms of locomotor activity, metabolism, and behavior. This gene is upregulated by CLOCK/ARNTL heterodimers but then represses this upregulation in a feedback loop using PER/CRY heterodimers to interact with CLOCK/ARNTL. Polymorphisms in this gene may increase the risk of getting certain cancers and have been linked to sleep disorders.

Note: This product is for in vitro research use only