

HSPG2 Antibody

Catalog No: #37817

Orders: order@signalwayantibody.comSupport: tech@signalwayantibody.com

Description

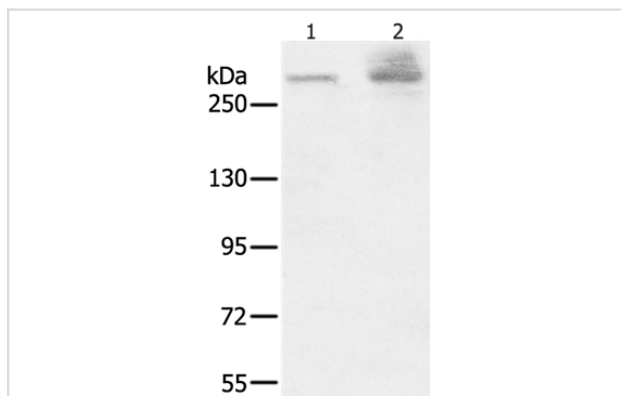
Product Name	HSPG2 Antibody
Host Species	Rabbit
Clonality	Polyclonal
Purification	Antigen affinity purification.
Applications	IHC
Species Reactivity	Hu Ms
Specificity	The antibody detects endogenous levels of total HSPG2 protein.
Immunogen Type	Peptide
Immunogen Description	Synthetic peptide corresponding to residues near the C terminal of human heparan sulfate proteoglycan 2
Target Name	HSPG2
Other Names	PLC; SJA; SJS; HSPG; SJS1; PRCAN
Accession No.	Swiss-Prot#: P98160NCBI Gene ID: 3339Gene Accssion: NP_005520/P98160
Uniprot	P98160
GeneID	3339;
SDS-PAGE MW	469kd
Concentration	3.2mg/ml
Formulation	Rabbit IgG in pH7.4 PBS, 0.05% NaN ₃ , 40% Glycerol.
Storage	Store at -20°C

Application Details

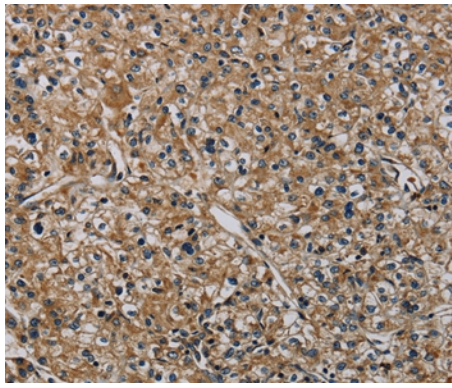
Western blotting: 1:200-1:1000

Immunohistochemistry: 1:50-1:200

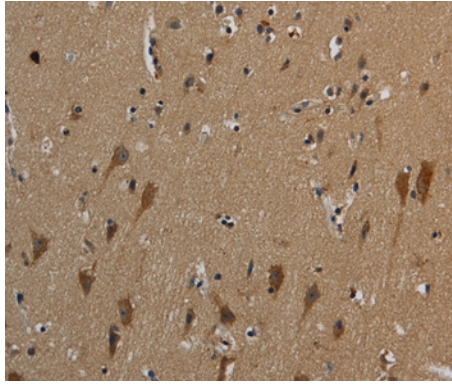
Images



Gel: 6%SDS-PAGE
 Lysates (from left to right): A549 and K562 cell
 Amount of lysate: 40ug per lane
 Primary antibody: 1/200 dilution
 Secondary antibody dilution: 1/8000
 Exposure time: 40 seconds



Immunohistochemical analysis of paraffin-embedded Human prostate cancer tissue using #37817 at dilution 1/50.



Immunohistochemical analysis of paraffin-embedded Human brain tissue using #37817 at dilution 1/50.

Background

This gene encodes the perlecan protein, which consists of a core protein to which three long chains of glycosaminoglycans (heparan sulfate or chondroitin sulfate) are attached. The perlecan protein is a large multidomain proteoglycan that binds to and cross-links many extracellular matrix components and cell-surface molecules. It has been shown that this protein interacts with laminin, prolargin, collagen type IV, FGFBP1, FBLN2, FGF7 and transthyretin, etc., and it plays essential roles in multiple biological activities.

Note: This product is for in vitro research use only