

## PPARGC1A Antibody

Catalog No: #37818

Orders: order@signalwayantibody.com

Support: tech@signalwayantibody.com

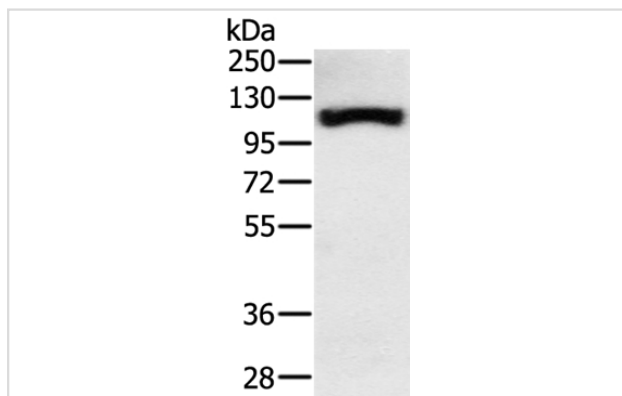
## Description

Product Name	PPARGC1A Antibody
Host Species	Rabbit
Clonality	Polyclonal
Purification	Antigen affinity purification.
Applications	WB
Species Reactivity	Hu Ms Rt
Specificity	The antibody detects endogenous levels of total PPARGC1A protein.
Immunogen Type	Peptide
Immunogen Description	Synthetic peptide corresponding to a region derived from internal residues of human peroxisome proliferator-activated receptor gamma, coactivator 1 alpha
Target Name	PPARGC1A
Other Names	LEM6; PGC1; PGC1A; PGC-1v; PPARGC1; PGC-1(alpha)
Accession No.	Swiss-Prot#: Q9UBK2NCBI Gene ID: 10891Gene Accssion: NP_037393/Q9UBK2
Uniprot	Q9UBK2
GeneID	10891;
SDS-PAGE MW	91kd
Concentration	0.8 mg/ml
Formulation	Rabbit IgG in pH7.4 PBS, 0.05% NaN <sub>3</sub> , 40% Glycerol.
Storage	Store at -20°C

## Application Details

Western blotting: 1:200-1:1000

## Images



Gel: 8%SDS-PAGE  
 Lysates (from left to right): Human fetal muscle tissue  
 Amount of lysate: 40ug per lane  
 Primary antibody: 1/300 dilution  
 Secondary antibody dilution: 1/8000  
 Exposure time: 2 minutes

## Background

The protein encoded by this gene is a transcriptional coactivator that regulates the genes involved in energy metabolism. This protein interacts with

PPARgamma, which permits the interaction of this protein with multiple transcription factors. This protein can interact with, and regulate the activities of, cAMP response element binding protein (CREB) and nuclear respiratory factors (NRFs). It provides a direct link between external physiological stimuli and the regulation of mitochondrial biogenesis, and is a major factor that regulates muscle fiber type determination.?

---

Note: This product is for in vitro research use only