

PIK3CB Antibody

Catalog No: #37828

Orders: order@signalwayantibody.comSupport: tech@signalwayantibody.com

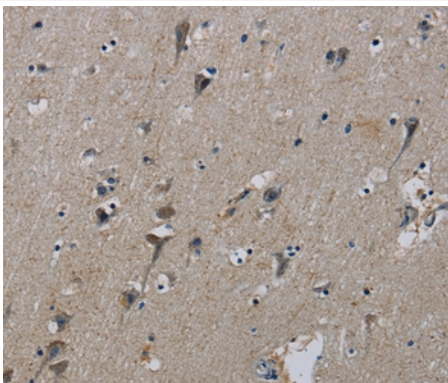
Description

| | |
|-----------------------|------------------------------------------------------------------------------------------------------------------------------------------------------------|
| Product Name | PIK3CB Antibody |
| Host Species | Rabbit |
| Clonality | Polyclonal |
| Purification | Antigen affinity purification. |
| Applications | IHC |
| Species Reactivity | Hu |
| Specificity | The antibody detects endogenous levels of total PIK3CB protein. |
| Immunogen Type | Peptide |
| Immunogen Description | Synthetic peptide corresponding to a region derived from internal residues of human phosphatidylinositol-4,5-bisphosphate 3-kinase, catalytic subunit beta |
| Target Name | PIK3CB |
| Other Names | PI3K; PIK3C1; P110BETA; PI3KBETA |
| Accession No. | Swiss-Prot#: P42338NCBI Gene ID: 5291Gene Accssion: NP_006210/P42338 |
| Uniprot | P42338 |
| GeneID | 5291; |
| Concentration | 3.1mg/ml |
| Formulation | Rabbit IgG in pH7.4 PBS, 0.05% NaN ₃ , 40% Glycerol. |
| Storage | Store at -20°C |

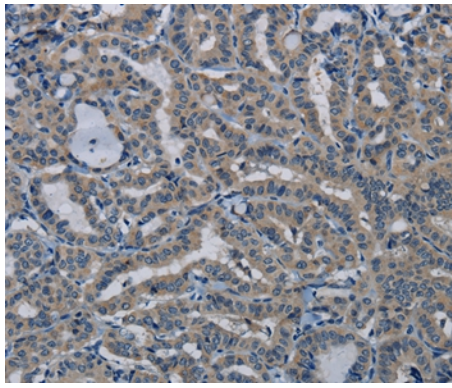
Application Details

Immunohistochemistry: 1:50-1:200

Images



Immunohistochemical analysis of paraffin-embedded Human brain tissue using #37828 at dilution 1/50.



Immunohistochemical analysis of paraffin-embedded Human thyroid cancer tissue using #37828 at dilution 1/50.

Background

This gene encodes an isoform of the catalytic subunit of phosphoinositide 3-kinase (PI3K). These kinases are important in signaling pathways involving receptors on the outer membrane of eukaryotic cells and are named for their catalytic subunit. The encoded protein is the catalytic subunit for PI3Kbeta (PI3KB). PI3KB has been shown to be part of the activation pathway in neutrophils which have bound immune complexes at sites of injury or infection. Alternative splicing results in multiple transcript variants.?

Note: This product is for in vitro research use only