

PKMYT1 Antibody

Catalog No: #37829

Orders: order@signalwayantibody.comSupport: tech@signalwayantibody.com

Description

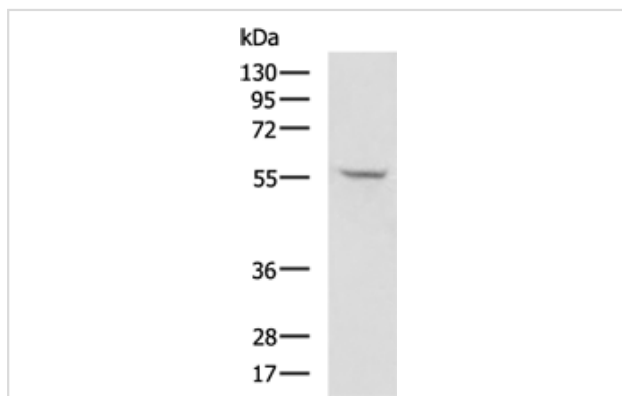
Product Name	PKMYT1 Antibody
Host Species	Rabbit
Clonality	Polyclonal
Purification	Antigen affinity purification.
Applications	WB IHC
Species Reactivity	Hu Ms
Specificity	The antibody detects endogenous levels of total PKMYT1 protein.
Immunogen Type	Peptide
Immunogen Description	Synthetic peptide corresponding to a region derived from internal residues of human protein kinase, membrane associated tyrosine/threonine 1
Target Name	PKMYT1
Other Names	MYT1; PPP1R126
Accession No.	Swiss-Prot#: Q99640NCBI Gene ID: 9088Gene Accssion: NP_004194 /Q99640
Uniprot	Q99640
GeneID	9088;
SDS-PAGE MW	55kd
Concentration	0.8mg/ml
Formulation	Rabbit IgG in pH7.4 PBS, 0.05% NaN ₃ , 40% Glycerol.
Storage	Store at -20°C

Application Details

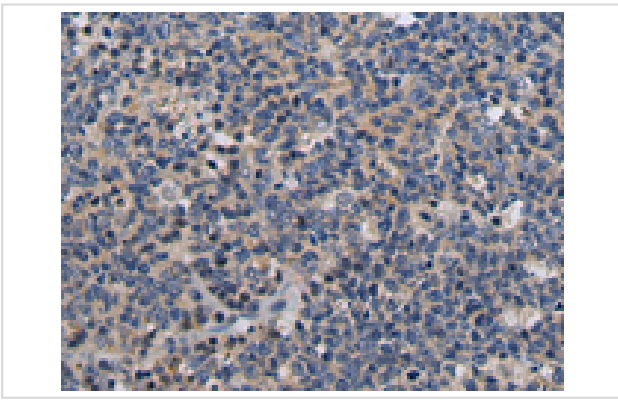
Western blotting: 1:200-1:1000

Immunohistochemistry: 1:25-1:50

Images



Gel: 8%SDS-PAGE Lysate: 40 μ g Lane: A375 cell lysate
 Primary antibody: PKMYT1 Antibody at dilution 1/200
 Secondary antibody: Goat anti rabbit IgG at 1/5000 dilution
 Exposure time: 5 minutes



The image is immunohistochemistry of paraffin-embedded Human tonsil tissue using PKMYT1 Antibody at dilution 1/35. (Original magnification: \times 200).

Background

This gene encodes a member of the serine/threonine protein kinase family. The encoded protein is a membrane-associated kinase that negatively regulates the G2/M transition of the cell cycle by phosphorylating and inactivating cyclin-dependent kinase 1. The activity of the encoded protein is regulated by polo-like kinase 1. Alternatively spliced transcript variants encoding multiple isoforms have been observed for this gene.

Note: This product is for in vitro research use only