

## PLXND1 Antibody

Catalog No: #37837

Orders: [order@signalwayantibody.com](mailto:order@signalwayantibody.com)Support: [tech@signalwayantibody.com](mailto:tech@signalwayantibody.com)

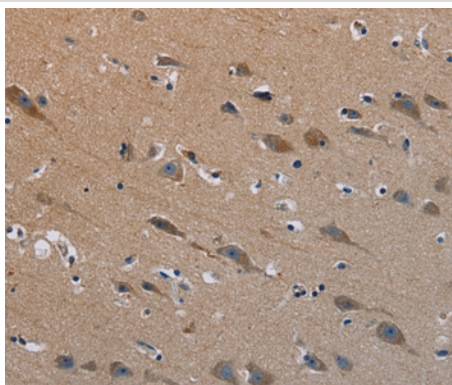
## Description

Product Name	PLXND1 Antibody
Host Species	Rabbit
Clonality	Polyclonal
Purification	Antigen affinity purification.
Applications	IHC
Species Reactivity	Hu Ms
Specificity	The antibody detects endogenous levels of total PLXND1 protein.
Immunogen Type	Peptide
Immunogen Description	Synthetic peptide corresponding to a region derived from internal residues of human plexin D1
Target Name	PLXND1
Other Names	PLEXD1
Accession No.	Swiss-Prot#: Q9Y4D7NCBI Gene ID: 23129Gene Accssion: NP_055918/Q9Y4D7
Uniprot	Q9Y4D7
GeneID	23129;
Concentration	2.7mg/ml
Formulation	Rabbit IgG in pH7.4 PBS, 0.05% NaN <sub>3</sub> , 40% Glycerol.
Storage	Store at -20°C

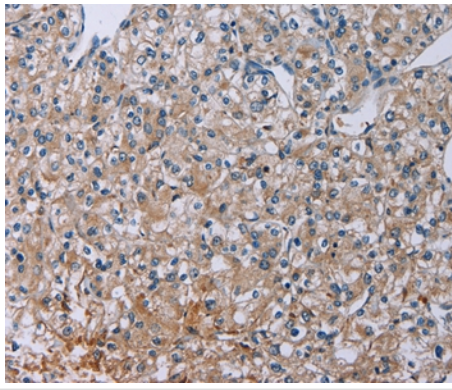
## Application Details

Immunohistochemistry: 1:25-1:100

## Images



Immunohistochemical analysis of paraffin-embedded Human brain tissue using #37837 at dilution 1/40.



Immunohistochemical analysis of paraffin-embedded Human prostate cancer tissue using #37837 at dilution 1/40.

## Background

Cell surface receptor for SEMA4A and for class 3 semaphorins, such as SEMA3A, SEMA3C and SEMA3E. Plays an important role in cell-cell signaling, and in regulating the migration of a wide spectrum of cell types. Regulates the migration of thymocytes in the medulla. Regulates endothelial cell migration. Plays an important role in ensuring the specificity of synapse formation. Required for normal development of the heart and vasculature?By similarity. Mediates anti-angiogenic signaling in response to SEMA3E.

Note: This product is for in vitro research use only