

POMT1 Antibody

Catalog No: #37839

Orders: order@signalwayantibody.com

Support: tech@signalwayantibody.com

Description

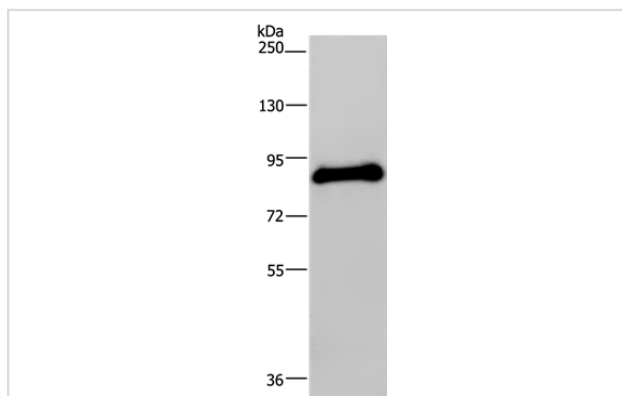
Product Name	POMT1 Antibody
Host Species	Rabbit
Clonality	Polyclonal
Purification	Antigen affinity purification.
Applications	WB IHC
Species Reactivity	Hu
Specificity	The antibody detects endogenous levels of total POMT1 protein.
Immunogen Type	Peptide
Immunogen Description	Synthetic peptide corresponding to a region derived from internal residues of human protein-O-mannosyltransferase 1
Target Name	POMT1
Other Names	RT; LGMD2K; MDDGA1; MDDGB1; MDDGC1
Accession No.	Swiss-Prot#: Q9Y6A1 NCBI Gene ID: 10585 Gene Accssion: NP_009102/Q9Y6A1
Uniprot	Q9Y6A1
GeneID	10585;
SDS-PAGE MW	85kd
Concentration	3.2mg/ml
Formulation	Rabbit IgG in pH7.4 PBS, 0.05% NaN ₃ , 40% Glycerol.
Storage	Store at -20°C

Application Details

Western blotting: 1:500-1:2000

Immunohistochemistry: 1:50-1:200

Images



Gel: 6%SDS-PAGE

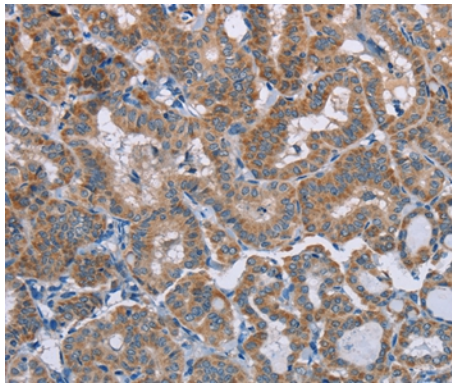
Lysates (from left to right): Human testis tissue

Amount of lysate: 40ug per lane

Primary antibody: 1/200 dilution

Secondary antibody dilution: 1/8000

Exposure time: 1 minute



Immunohistochemical analysis of paraffin-embedded Human thyroid cancer tissue using #37839 at dilution 1/50.

Background

The protein encoded by this gene is an O-mannosyltransferase that requires interaction with the product of the POMT2 gene for enzymatic function. The encoded protein is found in the membrane of the endoplasmic reticulum. Defects in this gene are a cause of Walker-Warburg syndrome (WWS) and limb-girdle muscular dystrophy type 2K (LGMD2K). Several transcript variants encoding different isoforms have been found for this gene.

Note: This product is for in vitro research use only