

PON1 Antibody

Catalog No: #37840

Orders: order@signalwayantibody.com

Support: tech@signalwayantibody.com

Description

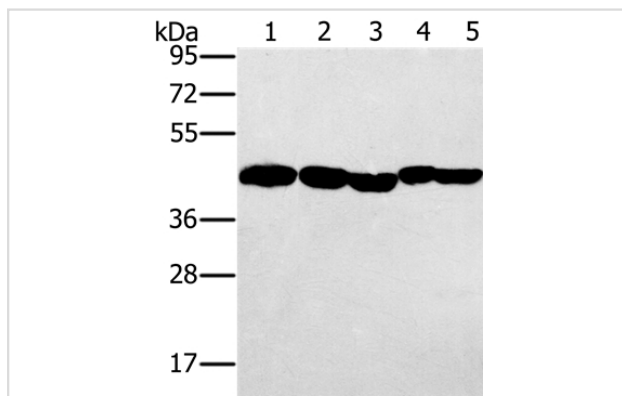
Product Name	PON1 Antibody
Host Species	Rabbit
Clonality	Polyclonal
Purification	Antigen affinity purification.
Applications	WB IHC
Species Reactivity	Human, Mouse, Rat
Specificity	The antibody detects endogenous levels of total PON1 protein.
Immunogen Type	Peptide
Immunogen Description	Synthetic peptide of human PON1
Target Name	PON1
Other Names	ESA; PON; MVCD5
Accession No.	Swiss-Prot#: P27169NCBI Gene ID: 5444Gene Accssion: NP_000437/P27169
Uniprot	P27169
GeneID	5444;
SDS-PAGE MW	40kd
Concentration	0.5 mg/ml
Formulation	Rabbit IgG in pH7.4 PBS, 0.05% NaN ₃ , 40% Glycerol.
Storage	Store at -20°C

Application Details

Western blotting: 1:1000-1:5000

Immunohistochemistry: 1:50-1:200

Images



Gel: 8%SDS-PAGE

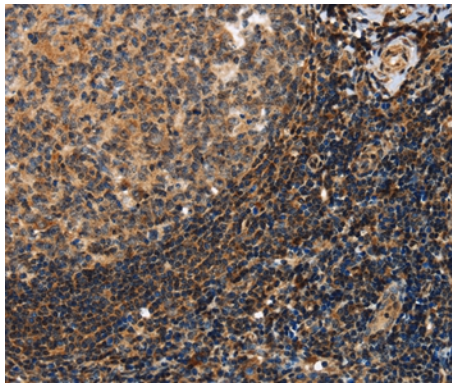
Lysates (from left to right): Hela, skov3 and A549 cell, mouse liver and human ovarian cancer tissue

Amount of lysate: 40ug per lane

Primary antibody: 1/500 dilution

Secondary antibody dilution: 1/8000

Exposure time: 20 seconds



Immunohistochemical analysis of paraffin-embedded Human tonsil tissue using #37840 at dilution 1/40.

Background

The enzyme encoded by this gene is an arylesterase that mainly hydrolyzes paroxon to produce p-nitrophenol. Paroxon is an organophosphorus anticholinesterase compound that is produced in vivo by oxidation of the insecticide parathion. Polymorphisms in this gene are a risk factor in coronary artery disease. The gene is found in a cluster of three related paraoxonase genes at 7q21.3.

Note: This product is for in vitro research use only