

POU6F2 Antibody

Catalog No: #37841

Orders: order@signalwayantibody.comSupport: tech@signalwayantibody.com

Description

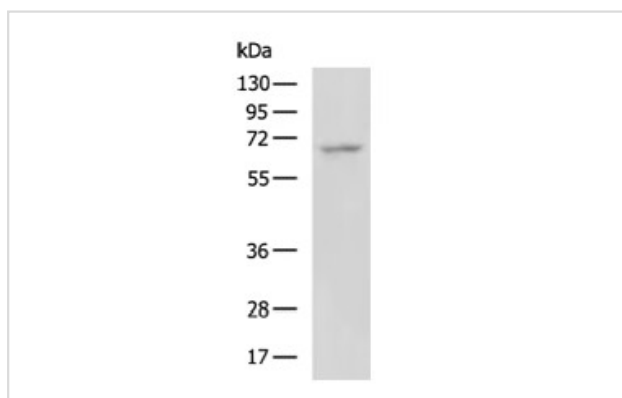
Product Name	POU6F2 Antibody
Host Species	Rabbit
Clonality	Polyclonal
Purification	Antigen affinity purification.
Applications	WB IHC
Species Reactivity	Hu Ms
Specificity	The antibody detects endogenous levels of total POU6F2 protein.
Immunogen Type	Peptide
Immunogen Description	Synthetic peptide corresponding to a region derived from internal residues of human POU class 6 homeobox 2
Target Name	POU6F2
Other Names	WT5; WTSL; RPF-1
Accession No.	Swiss-Prot#: P78424NCBI Gene ID: 11281Gene Accssion: NP_001159490/P78424
Uniprot	P78424
GeneID	11281;
SDS-PAGE MW	73kd
Concentration	1 mg/ml
Formulation	Rabbit IgG in pH7.4 PBS, 0.05% NaN ₃ , 40% Glycerol.
Storage	Store at -20°C

Application Details

Western blotting: 1:500~1:2000

Immunohistochemistry: 1:50~1:100

Images



Gel: 8%SDS-PAGE Lysate: 40 μ g Lane: Human placenta tissue lysate
 Primary antibody: POU6F2 Antibody at dilution 1/800
 Secondary antibody: Goat anti rabbit IgG at 1/5000 dilution
 Exposure time: 3 minutes



The image on the left is immunohistochemistry of paraffinembedded Human tonsil tissue using POU6F2 Antibody at dilution 1/50, on the right is treated with synthetic peptide.(Original magnification: $\times 200$)

Background

This gene encodes a member of the POU protein family characterized by the presence of a bipartite DNA binding domain, consisting of a POU-specific domain and a homeodomain, separated by a variable polylinker. The DNA binding domain may bind to DNA as monomers or as homo- and/or heterodimers, in a sequence-specific manner. The POU family members are transcriptional regulators, many of which are known to control cell type-specific differentiation pathways. This gene is a tumor suppressor involved in Wilms tumor (WT) predisposition.?

Note: This product is for in vitro research use only