

## PPP1CC Antibody

Catalog No: #37842

Orders: order@signalwayantibody.com

Support: tech@signalwayantibody.com

## Description

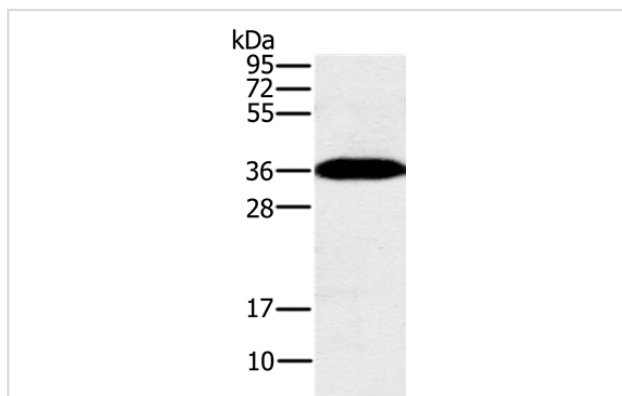
Product Name	PPP1CC Antibody
Host Species	Rabbit
Clonality	Polyclonal
Purification	Antigen affinity purification.
Applications	WB IHC
Species Reactivity	Hu Ms Rt
Specificity	The antibody detects endogenous levels of total PPP1CC protein.
Immunogen Type	Peptide
Immunogen Description	Synthetic peptide corresponding to residues near the C terminal of human protein phosphatase 1, catalytic subunit, gamma isozyme
Target Name	PPP1CC
Other Names	PP1C; PP-1G; PPP1G
Accession No.	Swiss-Prot#: P36873NCBI Gene ID: 5501Gene Accssion: NP_002701/P36873
Uniprot	P36873
GeneID	5501;
SDS-PAGE MW	37kd
Concentration	2.5mg/ml
Formulation	Rabbit IgG in pH7.4 PBS, 0.05% NaN <sub>3</sub> , 40% Glycerol.
Storage	Store at -20°C

## Application Details

Western blotting: 1:500-1:2000

Immunohistochemistry: 1:50-1:200

## Images



Gel: 10%SDS-PAGE

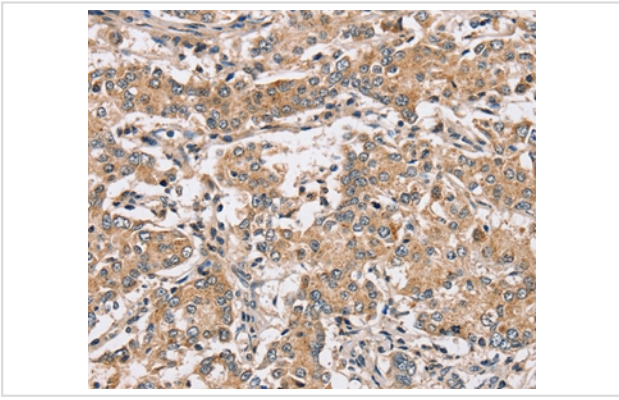
Lysates (from left to right): Mouse brain tissue

Amount of lysate: 40ug per lane

Primary antibody: 1/200 dilution

Secondary antibody dilution: 1/8000

Exposure time: 10 seconds



Immunohistochemical analysis of paraffin-embedded Human liver cancer tissue using #37842 at dilution 1/40.

## Background

The protein encoded by this gene belongs to the protein phosphatase family, PP1 subfamily. PP1 is an ubiquitous serine/threonine phosphatase that regulates many cellular processes, including cell division. It is expressed in mammalian cells as three closely related isoforms, alpha, beta/delta and gamma, which have distinct localization patterns. This gene encodes the gamma isozyme. Alternatively spliced transcript variants encoding different isoforms have been found for this gene.?

Note: This product is for in vitro research use only