

## PPM1F Antibody

Catalog No: #37843

Orders: order@signalwayantibody.com

Support: tech@signalwayantibody.com

## Description

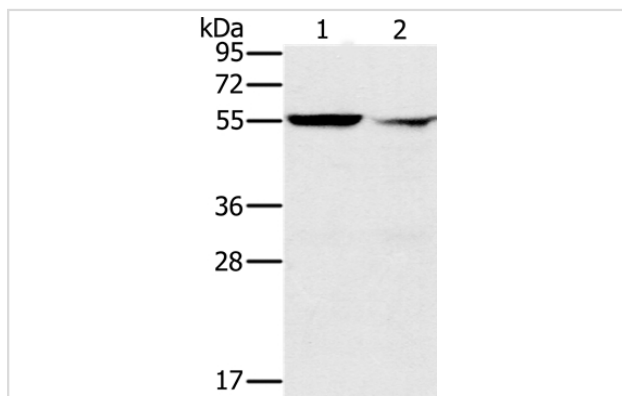
Product Name	PPM1F Antibody
Host Species	Rabbit
Clonality	Polyclonal
Purification	Antigen affinity purification.
Applications	WB IHC
Species Reactivity	Hu
Specificity	The antibody detects endogenous levels of total PPM1F protein.
Immunogen Type	Peptide
Immunogen Description	Synthetic peptide corresponding to residues near the C terminal of human protein phosphatase, Mg <sup>2+</sup> /Mn <sup>2+</sup> dependent, 1F
Target Name	PPM1F
Other Names	CAMKP; FEM-2; POPX2; hFEM-2; CaMKPase
Accession No.	Swiss-Prot#: P49593NCBI Gene ID: 9647Gene Accssion: NP_055449/P49593
Uniprot	P49593
GeneID	9647;
SDS-PAGE MW	50kd
Concentration	2.7mg/ml
Formulation	Rabbit IgG in pH7.4 PBS, 0.05% NaN <sub>3</sub> , 40% Glycerol.
Storage	Store at -20°C

## Application Details

Western blotting: 1:500-1:2000

Immunohistochemistry: 1:50-1:200

## Images



Gel: 8%SDS-PAGE

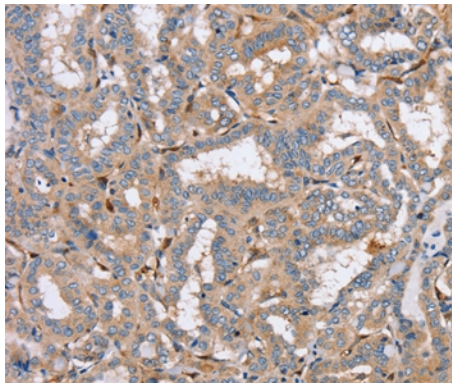
Lysates (from left to right): K562 cell and human fetal liver tissue

Amount of lysate: 40ug per lane

Primary antibody: 1/200 dilution

Secondary antibody dilution: 1/8000

Exposure time: 10 seconds



Immunohistochemical analysis of paraffin-embedded Human thyroid cancer tissue using #37843 at dilution 1/40.

## Background

The protein encoded by this gene is a member of the PP2C family of Ser/Thr protein phosphatases. PP2C family members are known to be negative regulators of cell stress response pathways. This phosphatase can interact with Rho guanine nucleotide exchange factors (PIX), and thus block the effects of p21-activated kinase 1 (PAK), a protein kinase mediating biological effects downstream of Rho GTPases. Calcium/calmodulin-dependent protein kinase II gamma (CAMK2G/CAMK-II) is found to be one of the substrates of this phosphatase.?

Note: This product is for in vitro research use only