

PPP2R3A Antibody

Catalog No: #37845

Orders: order@signalwayantibody.com

Support: tech@signalwayantibody.com

Description

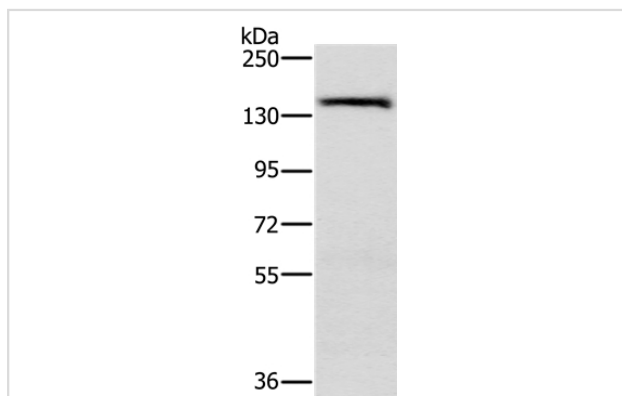
Product Name	PPP2R3A Antibody
Host Species	Rabbit
Clonality	Polyclonal
Purification	Antigen affinity purification.
Applications	WB IHC
Species Reactivity	Hu
Specificity	The antibody detects endogenous levels of total PPP2R3A protein.
Immunogen Type	Peptide
Immunogen Description	Synthetic peptide corresponding to a region derived from internal residues of human protein phosphatase 2, regulatory subunit B", alpha
Target Name	PPP2R3A
Other Names	PR72; PR130; PPP2R3
Accession No.	Swiss-Prot#: Q06190NCBI Gene ID: 5523Gene Accssion: NP_001177376/Q06190
Uniprot	Q06190
GeneID	5523;
SDS-PAGE MW	130kd
Concentration	1.8mg/ml
Formulation	Rabbit IgG in pH7.4 PBS, 0.05% NaN ₃ , 40% Glycerol.
Storage	Store at -20°C

Application Details

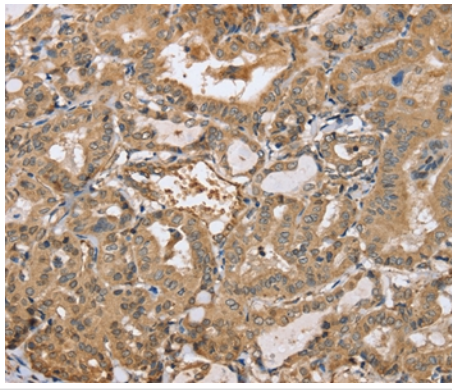
Western blotting: 1:200-1:1000

Immunohistochemistry: 1:50-1:200

Images



Gel: 6%SDS-PAGE
Lysate: 40ug A172 cell
Primary antibody: 1/200 dilution
Secondary antibody dilution: 1/8000
Exposure time: 30 seconds



Immunohistochemical analysis of paraffin-embedded Human thyroid cancer tissue using #37845 at dilution 1/30.

Background

This gene encodes one of the regulatory subunits of the protein phosphatase 2. Protein phosphatase 2 (formerly named type 2A) is one of the four major Ser/Thr phosphatases and is implicated in the negative control of cell growth and division. Protein phosphatase 2 holoenzymes are heterotrimeric proteins composed of a structural subunit A, a catalytic subunit C, and a regulatory subunit B. The regulatory subunit is encoded by a diverse set of genes that have been grouped into the B/PR55, B'/PR61, and B''/PR72 families.

Note: This product is for in vitro research use only