

## PTPN4 Antibody

Catalog No: #37851

Orders: [order@signalwayantibody.com](mailto:order@signalwayantibody.com)Support: [tech@signalwayantibody.com](mailto:tech@signalwayantibody.com)

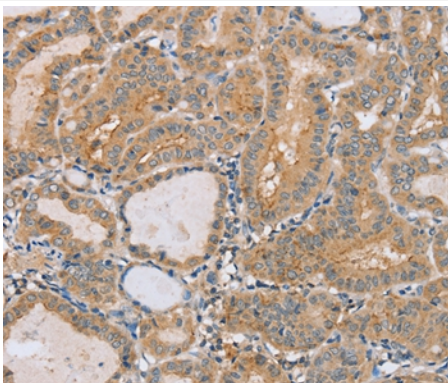
## Description

|                       |  |
|-----------------------|--|
| Product Name          | PTPN4 Antibody   |
| Host Species          | Rabbit   |
| Clonality             | Polyclonal   |
| Purification          | Antigen affinity purification.   |
| Applications          | IHC  |
| Species Reactivity    | Hu Ms  |
| Specificity           | The antibody detects endogenous levels of total PTPN4 protein.   |
| Immunogen Type        | Peptide  |
| Immunogen Description | Synthetic peptide corresponding to residues near the N terminal of human protein tyrosine phosphatase, non-receptor type 4 (megakaryocyte) |
| Target Name           | PTPN4  |
| Other Names           | MEG; PTPMEG; PTPMEG1   |
| Accession No.         | Swiss-Prot#: P29074NCBI Gene ID: 5775Gene Accssion: NP_002821/P29074   |
| Uniprot               | P29074   |
| GeneID                | 5775;  |
| Concentration         | 2.6mg/ml   |
| Formulation           | Rabbit IgG in pH7.4 PBS, 0.05% NaN <sub>3</sub> , 40% Glycerol.  |
| Storage               | Store at -20°C   |

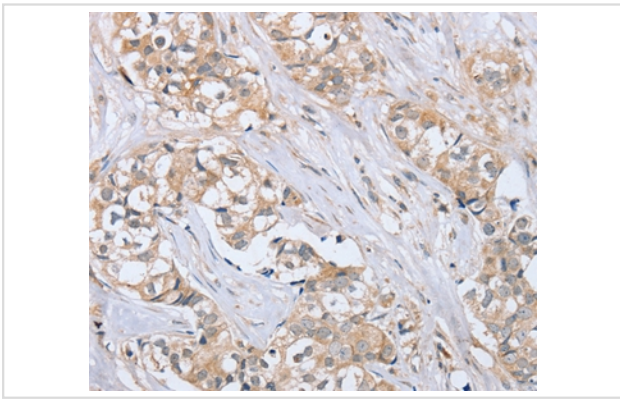
## Application Details

Immunohistochemistry: 1:50-1:200

## Images



Immunohistochemical analysis of paraffin-embedded Human thyroid cancer tissue using #37851 at dilution 1/40.



Immunohistochemical analysis of paraffin-embedded Human breast cancer tissue using #37851 at dilution 1/40.

## Background

The protein encoded by this gene is a member of the protein tyrosine phosphatase (PTP) family. PTPs are known to be signaling molecules that regulate a variety of cellular processes including cell growth, differentiation, mitotic cycle, and oncogenic transformation. This protein contains a C-terminal PTP domain and an N-terminal domain homologous to the band 4.1 superfamily of cytoskeletal-associated proteins.

Note: This product is for in vitro research use only