

## RAB14 Antibody

Catalog No: #37854

Orders: order@signalwayantibody.com

Support: tech@signalwayantibody.com

## Description

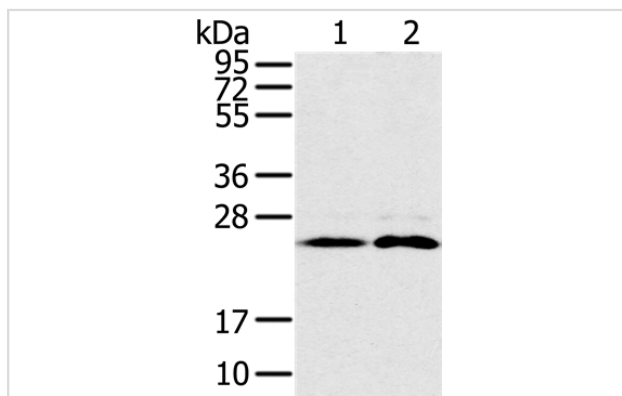
Product Name	RAB14 Antibody
Host Species	Rabbit
Clonality	Polyclonal
Purification	Antigen affinity purification.
Applications	WB IHC
Species Reactivity	Hu Ms Rt
Specificity	The antibody detects endogenous levels of total RAB14 protein.
Immunogen Type	Peptide
Immunogen Description	Synthetic peptide corresponding to residues near the C terminal of human RAB14, member RAS oncogene family
Target Name	RAB14
Other Names	FBP; RAB-14
Accession No.	Swiss-Prot#: P61106NCBI Gene ID: 51552Gene Accssion: NP_057406/P61106
Uniprot	P61106
GeneID	51552;
SDS-PAGE MW	24kd
Concentration	2.7mg/ml
Formulation	Rabbit IgG in pH7.4 PBS, 0.05% NaN <sub>3</sub> , 40% Glycerol.
Storage	Store at -20°C

## Application Details

Western blotting: 1:200-1:1000

Immunohistochemistry: 1:50-1:300

## Images



Gel: 10%SDS-PAGE

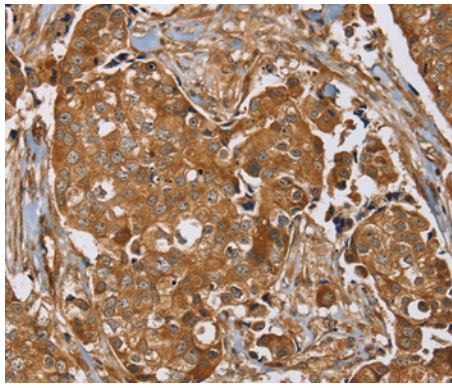
Lysates (from left to right): Mouse brain tissue and Raji cell

Amount of lysate: 40ug per lane

Primary antibody: 1/200 dilution

Secondary antibody dilution: 1/8000

Exposure time: 30 seconds



Immunohistochemical analysis of paraffin-embedded Human breast cancer tissue using #37854 at dilution 1/40.

## Background

RAB14 belongs to the large RAB family of low molecular mass GTPases that are involved in intracellular membrane trafficking. These proteins act as molecular switches that flip between an inactive GDP-bound state and an active GTP-bound state in which they recruit downstream effector proteins onto membranes.

Note: This product is for in vitro research use only