

CIZ1 Antibody

Catalog No: #37856

Orders: order@signalwayantibody.comSupport: tech@signalwayantibody.com

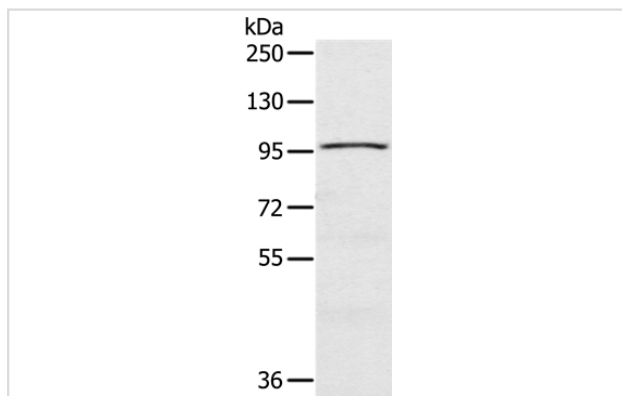
Description

Product Name	CIZ1 Antibody
Host Species	Rabbit
Clonality	Polyclonal
Purification	Antigen affinity purification.
Applications	WB
Species Reactivity	Hu
Specificity	The antibody detects endogenous levels of total CIZ1 protein.
Immunogen Type	Peptide
Immunogen Description	Synthetic peptide corresponding to a region derived from internal residues of human CDKN1A interacting zinc finger protein 1
Target Name	CIZ1
Other Names	NP94; LSFR1; ZNF356
Accession No.	Swiss-Prot#: Q9ULV3NCBI Gene ID: 25792Gene Accssion: NP_001124487/Q9ULV3
Uniprot	Q9ULV3
GeneID	25792;
SDS-PAGE MW	100kd
Concentration	2.4mg/ml
Formulation	Rabbit IgG in pH7.4 PBS, 0.05% NaN ₃ , 40% Glycerol.
Storage	Store at -20°C

Application Details

Western blotting: 1:200-1:1000

Images



Gel: 6%SDS-PAGE
 Lysate: 40ug A549 cell
 Primary antibody: 1/200 dilution
 Secondary antibody dilution: 1/8000
 Exposure time: 1 minute

Background

The protein encoded by this gene is a zinc finger DNA binding protein that interacts with CIP1, part of a complex with cyclin E. The encoded protein

may regulate the cellular localization of CIP1. Several transcript variants encoding different isoforms have been found for this gene.?

Note: This product is for in vitro research use only