

RAB21 Antibody

Catalog No: #37858

Orders: order@signalwayantibody.comSupport: tech@signalwayantibody.com

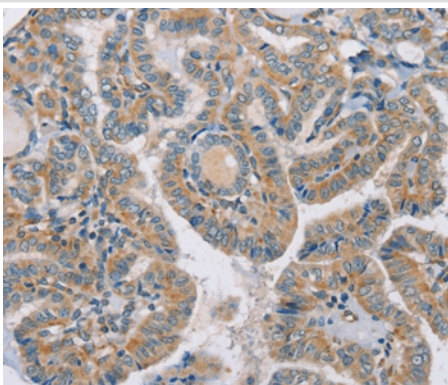
Description

Product Name	RAB21 Antibody
Host Species	Rabbit
Clonality	Polyclonal
Purification	Antigen affinity purification.
Applications	IHC
Species Reactivity	Hu Ms Rt
Specificity	The antibody detects endogenous levels of total RAB21 protein.
Immunogen Type	Peptide
Immunogen Description	Synthetic peptide corresponding to a region derived from internal residues of human RAB21, member RAS oncogene family
Target Name	RAB21
Other Names	KIAA0118; RAB21;
Accession No.	Swiss-Prot#: Q9UL25NCBI Gene ID: 23011Gene Accssion: NP_055814/Q9UL25
Uniprot	Q9UL25
GeneID	23011;
Concentration	2.2mg/ml
Formulation	Rabbit IgG in pH7.4 PBS, 0.05% NaN ₃ , 40% Glycerol.
Storage	Store at -20°C

Application Details

Immunohistochemistry: 1:25-1:100

Images



Immunohistochemical analysis of paraffin-embedded Human thyroid cancer tissue using #37858 at dilution 1/35.

Background

This gene belongs to the Rab family of monomeric GTPases, which are involved in the control of cellular membrane traffic. The encoded protein plays a role in the targeted trafficking of integrins via its association with integrin alpha tails. As a consequence, the encoded protein is involved in the

regulation of cell adhesion and migration.

Note: This product is for in vitro research use only