

RAB24 Antibody

Catalog No: #37859

Orders: order@signalwayantibody.comSupport: tech@signalwayantibody.com

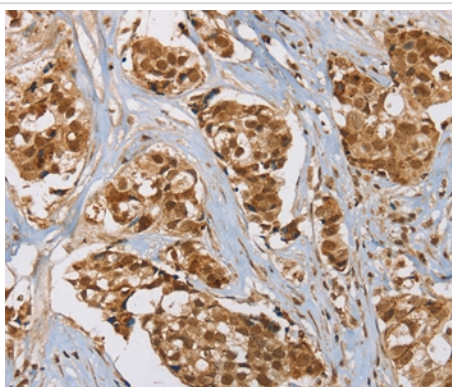
Description

Product Name	RAB24 Antibody
Host Species	Rabbit
Clonality	Polyclonal
Purification	Antigen affinity purification.
Applications	IHC
Species Reactivity	Hu Ms
Specificity	The antibody detects endogenous levels of total RAB24 protein.
Immunogen Type	Peptide
Immunogen Description	Synthetic peptide corresponding to a region derived from internal residues of human RAB24, member RAS oncogene family
Target Name	RAB24
Other Names	RAB24; RAB24 gene product;
Accession No.	Swiss-Prot#: Q969Q5NCBI Gene ID: 53917Gene Accssion: NP_001026847/Q969Q5
Uniprot	Q969Q5
GeneID	53917;
Concentration	2.8mg/ml
Formulation	Rabbit IgG in pH7.4 PBS, 0.05% NaN ₃ , 40% Glycerol.
Storage	Store at -20°C

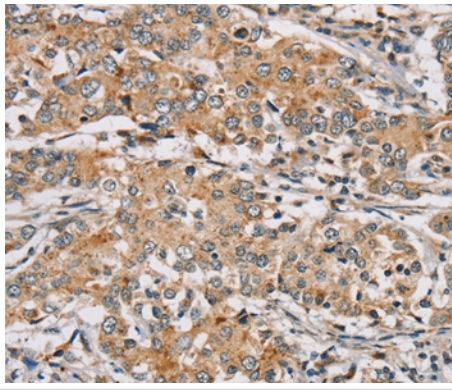
Application Details

Immunohistochemistry: 1:50-1:200

Images



Immunohistochemical analysis of paraffin-embedded Human breast cancer tissue using #37859 at dilution 1/45.



Immunohistochemical analysis of paraffin-embedded Human liver cancer tissue using #37859 at dilution 1/45.

Background

RAB24 is a small GTPase of the Rab subfamily of Ras-related proteins that regulate intracellular protein trafficking. May be involved in autophagy-related processes. Unlike other Rab family members, does not interact with GDP dissociation inhibitors (GDIs), including ARHGDI A and ARHGDI B. Interacts with ZFYVE20.

Note: This product is for in vitro research use only