

RASA2 Antibody

Catalog No: #37861

Orders: order@signalwayantibody.comSupport: tech@signalwayantibody.com

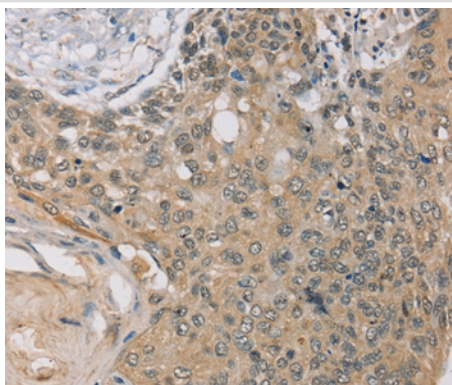
Description

Product Name	RASA2 Antibody
Host Species	Rabbit
Clonality	Polyclonal
Purification	Antigen affinity purification.
Applications	IHC
Species Reactivity	Hu
Specificity	The antibody detects endogenous levels of total RASA2 protein.
Immunogen Type	Peptide
Immunogen Description	Synthetic peptide corresponding to a region derived from internal residues of human RAS p21 protein activator 2
Target Name	RASA2
Other Names	GAP1M
Accession No.	Swiss-Prot#: Q15283NCBI Gene ID: 5922Gene Accssion: NP_006497/Q15283
Uniprot	Q15283
GeneID	5922;
Concentration	3mg/ml
Formulation	Rabbit IgG in pH7.4 PBS, 0.05% NaN ₃ , 40% Glycerol.
Storage	Store at -20°C

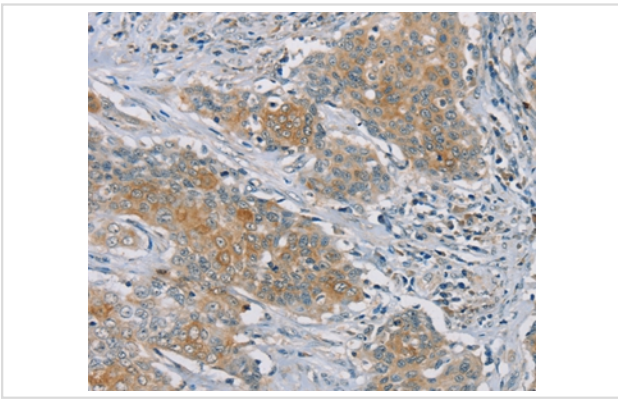
Application Details

Immunohistochemistry: 1:50-1:200

Images



Immunohistochemical analysis of paraffin-embedded Human esophagus cancer tissue using #37861 at dilution 1/45.



Immunohistochemical analysis of paraffin-embedded Human ovarian cancer tissue using #37861 at dilution 1/45.

Background

The protein encoded by this gene is member of the GAP1 family of GTPase-activating proteins. The gene product stimulates the GTPase activity of normal RAS p21 but not its oncogenic counterpart. Acting as a suppressor of RAS function, the protein enhances the weak intrinsic GTPase activity of RAS proteins resulting in the inactive GDP-bound form of RAS, thereby allowing control of cellular proliferation and differentiation. This particular family member has a perinuclear localization and is an inositol 1,3,4,5-tetrakisphosphate-binding protein; a compound suggested to function as a second messenger.

Note: This product is for in vitro research use only