

KDM5A Antibody

Catalog No: #37863

Orders: order@signalwayantibody.comSupport: tech@signalwayantibody.com

Description

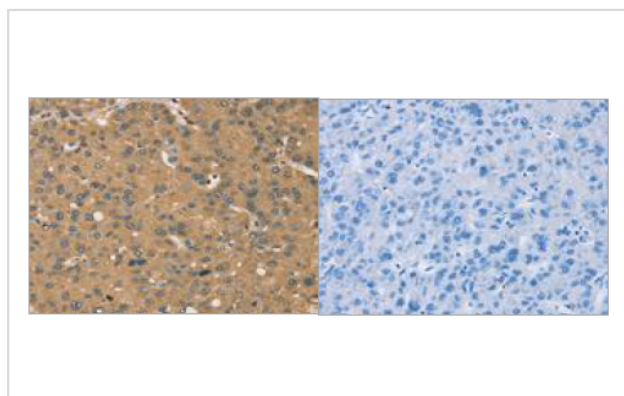
Product Name	KDM5A Antibody
Host Species	Rabbit
Clonality	Polyclonal
Purification	Antigen affinity purification.
Applications	WB IHC ELISA
Species Reactivity	Hu Ms
Specificity	The antibody detects endogenous levels of total KDM5A protein.
Immunogen Type	Peptide
Immunogen Description	Synthetic peptide corresponding to a region derived from internal residues of human lysine (K)-specific demethylase 5A
Target Name	KDM5A
Other Names	RBP2; RBBP2; RBBP-2
Accession No.	Swiss-Prot#: P29375NCBI Gene ID: 5927Gene Accssion: NP_001036068/P29375
Uniprot	P29375
GeneID	5927;
SDS-PAGE MW	192kd
Concentration	1.2mg/ml
Formulation	Rabbit IgG in pH7.4 PBS, 0.05% NaN ₃ , 40% Glycerol.
Storage	Store at -20°C

Application Details

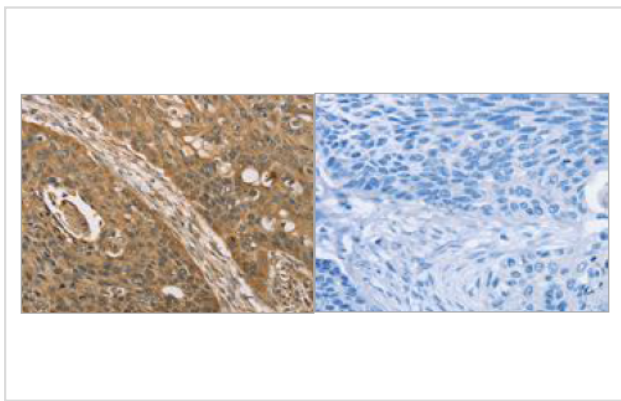
Immunohistochemistry: 1:50-1:300

WB: 500-2000

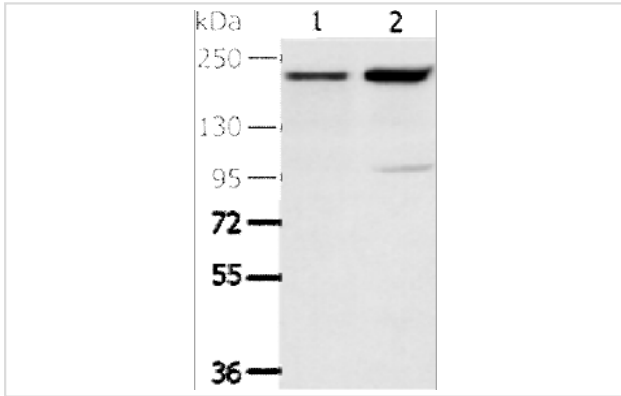
Images



The image on the left is immunohistochemistry of paraffin-embedded Human liver cancer tissue using KDM5A Antibody at dilution 1/45, on the right is treated with synthetic peptide. (Original magnification: $\times 200$)



The image on the left is immunohistochemistry of paraffin-embedded Human esophagus cancer tissue using KDM5A Antibody at dilution 1/45, on the right is treated with synthetic peptide. (Original magnification: $\times 200$)



Gel: 6%SDS-PAGE
Lysate: 40 μ g
Lane 1-2: 231 cells, hela cells
Primary antibody: KDM5A Antibody at dilution 1/200
Secondary antibody: Goat anti rabbit IgG at 1/8000 dilution
Exposure time: 2 minutes

Background

This gene encodes a member of the Jumonji, AT-rich interactive domain 1 (JARID1) histone demethylase protein family. The encoded protein plays a role in gene regulation through the histone code by specifically demethylating lysine 4 of histone H3. The encoded protein interacts with many other proteins, including retinoblastoma protein, and is implicated in the transcriptional regulation of Hox genes and cytokines. This gene may play a role in tumor progression.

Note: This product is for in vitro research use only