

## RBM38 Antibody

Catalog No: #37864

Orders: [order@signalwayantibody.com](mailto:order@signalwayantibody.com)Support: [tech@signalwayantibody.com](mailto:tech@signalwayantibody.com)

## Description

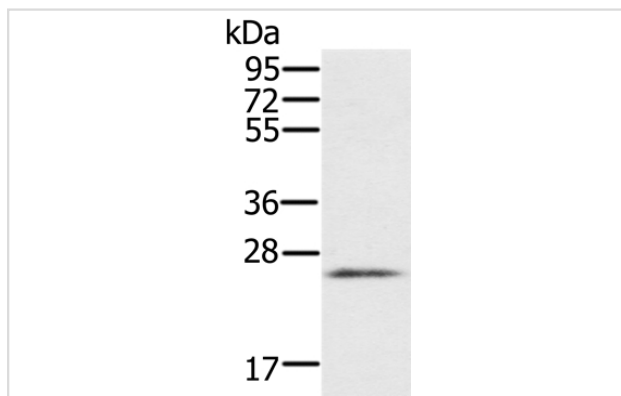
Product Name	RBM38 Antibody
Host Species	Rabbit
Clonality	Polyclonal
Purification	Antigen affinity purification.
Applications	WB IHC
Species Reactivity	Hu Ms
Specificity	The antibody detects endogenous levels of total RBM38 protein.
Immunogen Type	Peptide
Immunogen Description	Synthetic peptide corresponding to residues near the C terminal of human RNA binding motif protein 38
Target Name	RBM38
Other Names	RNPC1; SEB4B; SEB4D; HSRNASEB; dJ800J21.2
Accession No.	Swiss-Prot#: Q9H0Z9NCBI Gene ID: 55544Gene Accssion: NP_059965/Q9H0Z9
Uniprot	Q9H0Z9
GeneID	55544;
SDS-PAGE MW	25kd
Concentration	2.3mg/ml
Formulation	Rabbit IgG in pH7.4 PBS, 0.05% NaN <sub>3</sub> , 40% Glycerol.
Storage	Store at -20°C

## Application Details

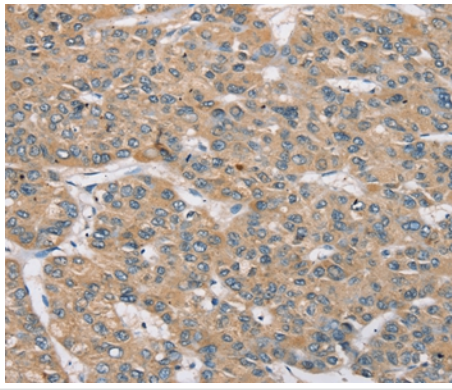
Western blotting: 1:200-1:1000

Immunohistochemistry: 1:25-1:100

## Images



Gel: 10%SDS-PAGE  
 Lysates (from left to right): Human heart tissue  
 Amount of lysate: 40ug per lane  
 Primary antibody: 1/200 dilution  
 Secondary antibody dilution: 1/8000  
 Exposure time: 1 minute



Immunohistochemical analysis of paraffin-embedded Human liver cancer tissue using #37864 at dilution 1/35.

## Background

RBM38 (RNA-binding protein 38), also known as RNPC1 or SEB4. RBM38 is a cell cycle protein found in the cytosol and the Nucleus that exists as two alternatively spliced isoforms, 1 (RNPC1a) and 2 (RNPC1b), of 239 and 121 amino acids, respectively. Independent of p53 expression, RBM38 isoform 1 induces cell cycle arrest in G1 phase through maintaining transcript stability at the 3'B—UTR of p21, a regulator of cell cycle progression at S phase. RBM38 is also an mRNA splicing factor that regulates the expression of FGFR2. RBM38 contains one RRM (RNA recognition motif) domain.

Note: This product is for in vitro research use only