

CDH4 Antibody

Catalog No: #37865

Orders: order@signalwayantibody.comSupport: tech@signalwayantibody.com

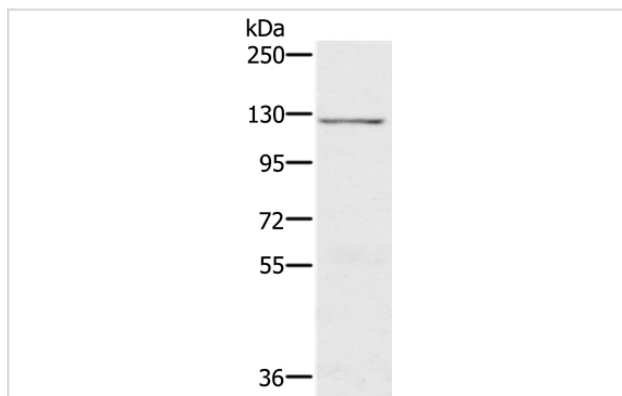
Description

Product Name	CDH4 Antibody
Host Species	Rabbit
Clonality	Polyclonal
Purification	Antigen affinity purification.
Applications	WB
Species Reactivity	Hu Ms
Specificity	The antibody detects endogenous levels of total CDH4 protein.
Immunogen Type	Peptide
Immunogen Description	Synthetic peptide corresponding to residues near the C terminal of human cadherin 4, type 1, R-cadherin (retinal)
Target Name	CDH4
Other Names	CAD4; RCAD; R-CAD
Accession No.	Swiss-Prot#: P55283NCBI Gene ID: 1002Gene Accssion: NP_001239267/P55283
Uniprot	P55283
GeneID	1002;
SDS-PAGE MW	100kd
Concentration	3mg/ml
Formulation	Rabbit IgG in pH7.4 PBS, 0.05% NaN ₃ , 40% Glycerol.
Storage	Store at -20°C

Application Details

Western blotting: 1:200-1:1000

Images



Gel: 6%SDS-PAGE
Lysate: 40ug 231 cell
Primary antibody: 1/200 dilution
Secondary antibody dilution: 1/8000
Exposure time: 1 minute

Background

This gene is a classical cadherin from the cadherin superfamily. The encoded protein is a calcium-dependent cell-cell adhesion glycoprotein

comprised of five extracellular cadherin repeats, a transmembrane region and a highly conserved cytoplasmic tail. Based on studies in chicken and mouse, this cadherin is thought to play an important role during brain segmentation and neuronal outgrowth. In addition, a role in kidney and muscle development is indicated.?

Note: This product is for in vitro research use only