

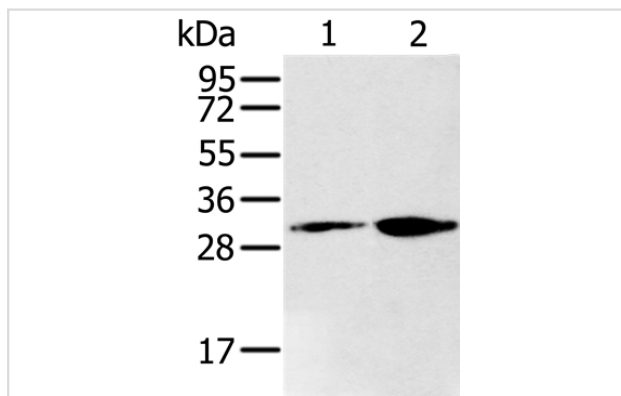
Description

Product Name	RNLS Antibody
Host Species	Rabbit
Clonality	Polyclonal
Purification	Antigen affinity purification.
Applications	WB
Species Reactivity	Hu
Specificity	The antibody detects endogenous levels of total RNLS protein.
Immunogen Type	Peptide
Immunogen Description	Synthetic peptide corresponding to a region derived from internal residues of human renalase, FAD-dependent amine oxidase
Target Name	RNLS
Other Names	C10orf59; RENALASE
Accession No.	Swiss-Prot#: Q5VYX0NCBI Gene ID: 55328Gene Accssion: NP_001026879/Q5VYX0
Uniprot	Q5VYX0
GeneID	55328;
SDS-PAGE MW	38kd
Concentration	2.5mg/ml
Formulation	Rabbit IgG in pH7.4 PBS, 0.05% NaN ₃ , 40% Glycerol.
Storage	Store at -20°C

Application Details

Western blotting: 1:500-1:2000

Images



Gel: 10%SDS-PAGE
 Lysates (from left to right): 293T and K562 cell
 Amount of lysate: 40ug per lane
 Primary antibody: 1/200 dilution
 Secondary antibody dilution: 1/8000
 Exposure time: 1 minute

Background

Renalase is a flavin adenine dinucleotide-dependent amine oxidase that is secreted into the blood from the kidney. Catalyzes the oxidation of the less

abundant alpha-NAD(P)H isoform to form beta-NAD(P)⁺. The enzyme hormone is secreted by the kidney, and circulates in blood and modulates cardiac function and systemic blood pressure. Lowers blood pressure in vivo by decreasing cardiac contractility and heart rate and preventing a compensatory increase in peripheral vascular tone, suggesting a causal link to the increased plasma catecholamine and heightened cardiovascular risk.

Note: This product is for in vitro research use only