

calcium binding protein P22 antibody

Catalog No: #22263

Orders: order@signalwayantibody.com

Support: tech@signalwayantibody.com

Description

Product Name	calcium binding protein P22 antibody
Host Species	Rabbit
Clonality	Polyclonal
Purification	Purified by antigen-affinity chromatography.
Applications	WB IF
Species Reactivity	Hu
Immunogen Type	Peptide
Immunogen Description	Synthetic peptide contain a sequence corresponding to a region within amino acids 47 and 111 of human CHP
Target Name	calcium binding protein P22
Accession No.	Swiss-Prot:Q99653Gene ID:11261
Uniprot	Q99653
GeneID	11261;
Concentration	1mg/ml
Formulation	Supplied in 0.1M Tris-buffered saline with 10% Glycerol (pH7.0). 0.01% Thimerosal was added as a preservative.
Storage	Store at -20°C for long term preservation (recommended). Store at 4°C for short term use.

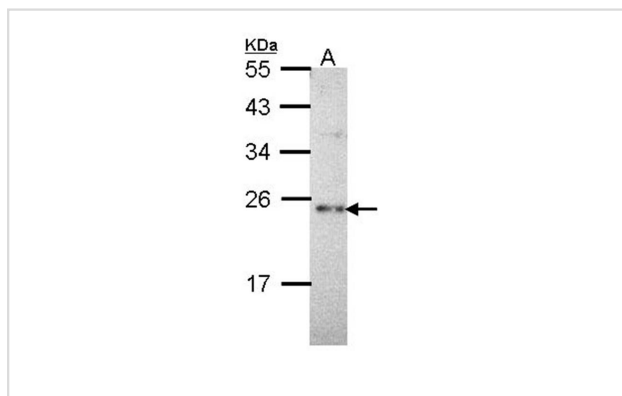
Application Details

Predicted MW: 22kd

Western blotting: 1:500-1:3000

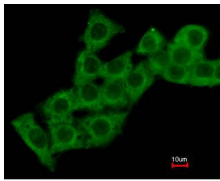
Immunofluorescence: 1:100-1:200

Images

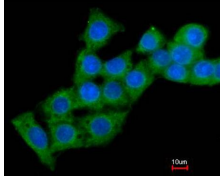


Sample (30 ug of whole cell lysate)
 A: Hep G2
 12% SDS PAGE
 Primary antibody diluted at 1: 1000

Immunofluorescence analysis of methanol-fixed HepG2, using Calcium binding protein P22 antibody at 1: 200 dilution.



Costained with Hoechst 33342



Background

This gene encodes a phosphoprotein that binds to the Na⁺/H⁺ exchanger NHE1. This protein serves as an essential cofactor which supports the physiological activity of NHE family members and may play a role in the mitogenic regulation of NHE1. The protein shares similarity with calcineurin B and calmodulin and it is also known to be an endogenous inhibitor of calcineurin activity. [provided by RefSeq]

Note: This product is for in vitro research use only