

RNF122 Antibody

Catalog No: #37872

Orders: order@signalwayantibody.comSupport: tech@signalwayantibody.com

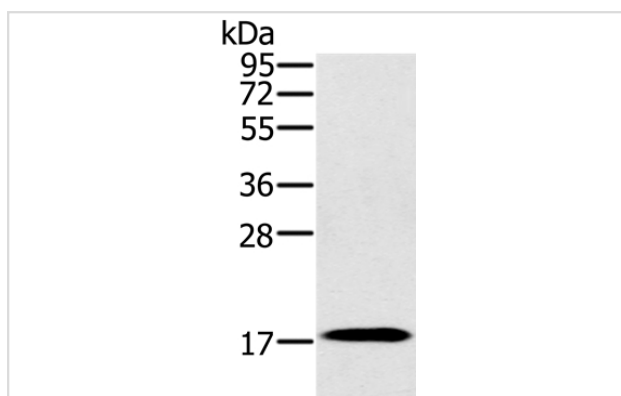
Description

Product Name	RNF122 Antibody
Host Species	Rabbit
Clonality	Polyclonal
Purification	Antigen affinity purification.
Applications	WB
Species Reactivity	Hu Ms
Specificity	The antibody detects endogenous levels of total RNF122 protein.
Immunogen Type	Peptide
Immunogen Description	Synthetic peptide corresponding to a region derived from internal residues of human ring finger protein 122
Target Name	RNF122
Other Names	FLJ12526; MGC126622; RING finger protein 122; RN122; RNF122
Accession No.	Swiss-Prot#: Q9H9V4NCBI Gene ID: 79845Gene Accssion: NP_079063/Q9H9V4
Uniprot	Q9H9V4
GeneID	79845;
SDS-PAGE MW	17kd
Concentration	2.6mg/ml
Formulation	Rabbit IgG in pH7.4 PBS, 0.05% NaN ₃ , 40% Glycerol.
Storage	Store at -20°C

Application Details

Western blotting: 1:500-1:2000

Images



Gel: 10%SDS-PAGE
 Lysates (from left to right): Mouse heart tissue
 Amount of lysate: 40ug per lane
 Primary antibody: 1/300 dilution
 Secondary antibody dilution: 1/8000
 Exposure time: 1 minute

Background

The encoded protein contains a RING finger, a motif present in a variety of functionally distinct proteins and known to be involved in protein-protein and protein-DNA interactions. The encoded protein is localized to the endoplasmic reticulum and golgi apparatus, and may be associated with cell

viability.

Note: This product is for in vitro research use only