

RNF148 Antibody

Catalog No: #37874

Orders: order@signalwayantibody.comSupport: tech@signalwayantibody.com

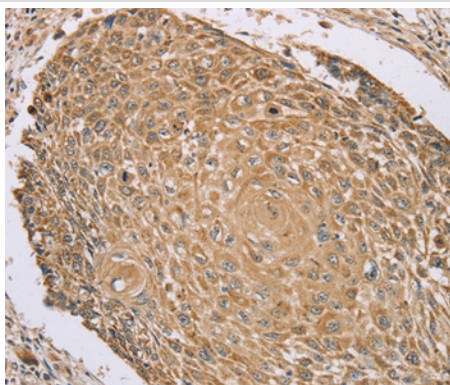
Description

Product Name	RNF148 Antibody
Host Species	Rabbit
Clonality	Polyclonal
Purification	Antigen affinity purification.
Applications	IHC
Species Reactivity	Hu
Specificity	The antibody detects endogenous levels of total RNF148 protein.
Immunogen Type	Peptide
Immunogen Description	Synthetic peptide corresponding to a region derived from internal residues of human ring finger protein 148
Target Name	RNF148
Other Names	MGC35222; RING finger protein 148; RN148; RNF148
Accession No.	Swiss-Prot#: Q8N7C7NCBI Gene ID: 378925Gene Accssion: NP_932351/Q8N7C7
Uniprot	Q8N7C7
GeneID	378925;
Concentration	2.9mg/ml
Formulation	Rabbit IgG in pH7.4 PBS, 0.05% NaN ₃ , 40% Glycerol.
Storage	Store at -20°C

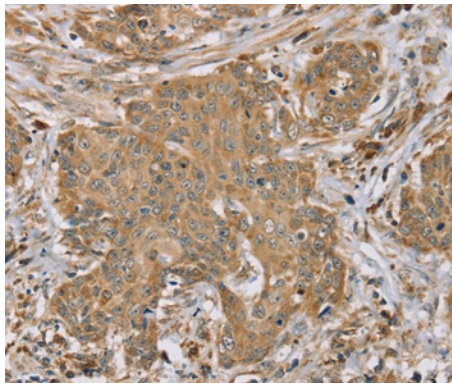
Application Details

Immunohistochemistry: 1:50-1:200

Images



Immunohistochemical analysis of paraffin-embedded Human lung cancer tissue using #37874 at dilution 1/45.



Immunohistochemical analysis of paraffin-embedded Human cervical cancer tissue using #37874 at dilution 1/45.

Background

RNF148 (RING finger protein 148) is a 305 amino acid single-pass membrane protein that contains one PA (protease associated) domain and a single RING-type zinc finger. RNF148 is encoded by a gene that maps to human chromosome 7, which houses over 1,000 genes and comprises nearly 5% of the human genome. Chromosome 7 has been linked to Osteogenesis imperfecta, Pendred syndrome, Lissencephaly, Citrullinemia and Shwachman-Diamond syndrome. The deletion of a portion of the q arm of chromosome 7 is associated with Williams-Beuren syndrome, a condition characterized by mild mental retardation, an unusual comfort and friendliness with strangers and an elfin appearance.

Note: This product is for in vitro research use only