

TRIM40 Antibody

Catalog No: #37877

Orders: order@signalwayantibody.com

Support: tech@signalwayantibody.com

Description

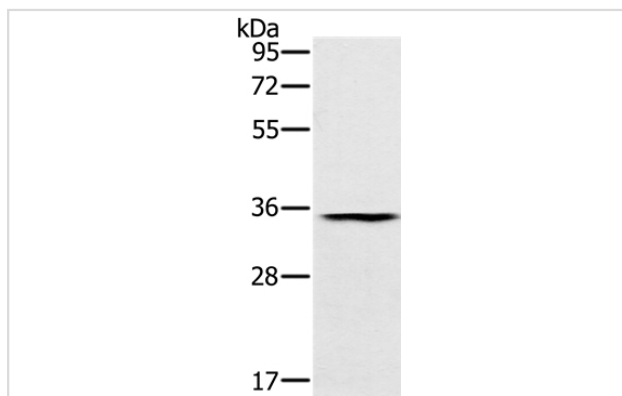
Product Name	TRIM40 Antibody
Host Species	Rabbit
Clonality	Polyclonal
Purification	Antigen affinity purification.
Applications	WB
Species Reactivity	Hu
Specificity	The antibody detects endogenous levels of total TRIM40 protein.
Immunogen Type	Peptide
Immunogen Description	Synthetic peptide corresponding to a region derived from internal residues of human tripartite motif containing 40
Target Name	TRIM40
Other Names	RNF35
Accession No.	Swiss-Prot#: Q6P9F5NCBI Gene ID: 135644Gene Accssion: NP_619645/Q6P9F5
Uniprot	Q6P9F5
GeneID	135644;
SDS-PAGE MW	29kd
Concentration	2.4mg/ml
Formulation	Rabbit IgG in pH7.4 PBS, 0.05% NaN ₃ , 40% Glycerol.
Storage	Store at -20°C

Application Details

Western blotting: 1:200-1:1000

Immunohistochemistry: 1:25-1:100

Images



Gel: 8%SDS-PAGE

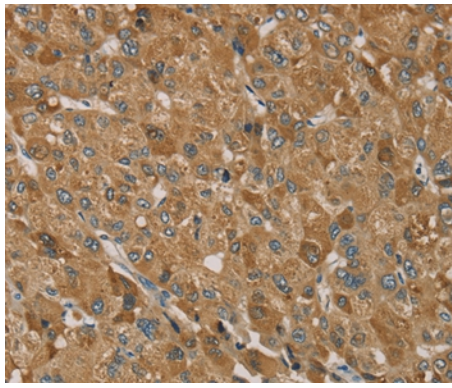
Lysates (from left to right): Human normal stomach tissue

Amount of lysate: 40ug per lane

Primary antibody: 1/200 dilution

Secondary antibody dilution: 1/8000

Exposure time: 40 seconds



Immunohistochemical analysis of paraffin-embedded Human liver cancer tissue using #37877 at dilution 1/35.

Background

This gene encodes a member of the tripartite motif (TRIM) protein family. The encoded protein may play a role as a negative regulator against inflammation and carcinogenesis in the gastrointestinal tract. Alternatively spliced transcript variants that encode different protein isoforms have been described.

Note: This product is for in vitro research use only